

INDEX OF SHEETS	
SHEET NO.	DESCRIPTION
1	COVER
2	NOTES
3	LEGEND
4	EXISTING CONDITIONS
5	REMOVAL PLAN
6	SITE LAYOUT PLAN
7	STORM PROFILES
8	DETAILED GRADING PLANS
12	SESC PLANS
13	DETAILS
14	PARK SIGNAGE PLAN

NORTHFIELD TOWNSHIP
WASHTENAW COUNTY, MICHIGAN
COMMUNITY PARK - PATHWAYS AND PARKING
MDNRE GRANT PROJECT #TF21-0200
9641 MAIN STREET, WHITMORE LAKE, MI 48189

NORTHFIELD TOWNSHIP
OFFICIALS

KENNETH DIGNAN III
 • SUPERVISOR •

KATHY MANLEY
 • CLERK •

JACQUELINE OTTO
 • TREASURER •

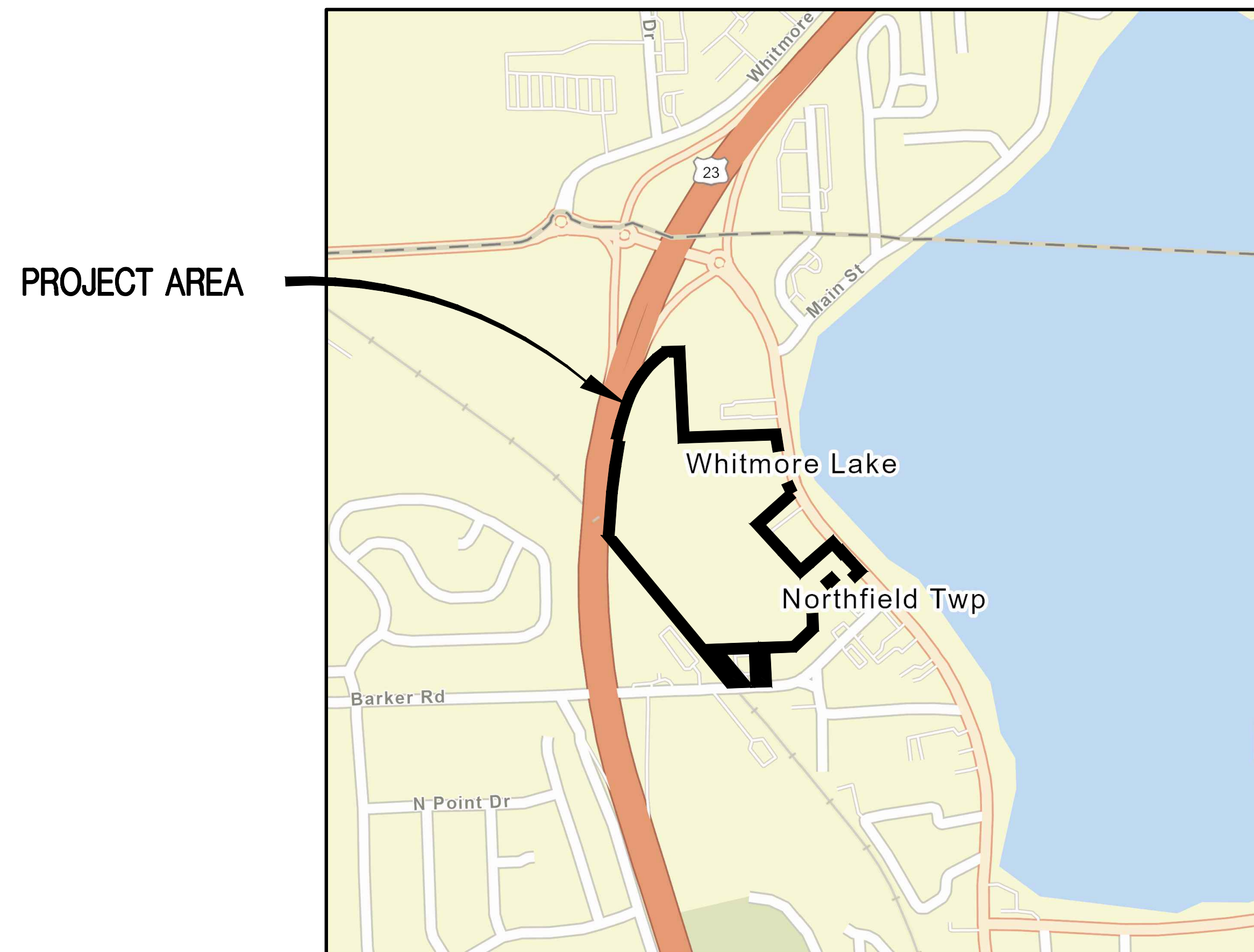
JANET CHICK
NATHAN MUCHOW

JOSHUA NELSON

RACHEL SMITH
 • TRUSTEES •

MARK LLOYD
 • TOWNSHIP MANAGER •

M.D.O.T. STANDARD PLANS	
TITLE	PLAN NO.
DRAINAGE STRUCTURES	R-1-D
COVER G	R-7-E
*SIDEWALK RAMP AND DETECTABLE WARNING DETAILS	*R-28-F
DRIVEWAY OPENINGS & APPROACHES AND CONCRETE SIDEWALKS	R-29-F
CONCRETE CURB AND CONCRETE CURB & GUTTER	R-30-E
UTILITY TRENCHES	R-83-B
PRECAST CONCRETE END SECTIONS FOR PIPE CULVERT	R-86-D
*SEEDING AND TREE PLANTING	*R-100-F
GRADING CROSS-SECTIONS	R-105-D
*MDOT SPECIAL DETAIL	



LOCATION MAP
 N.T.S.

PRIME PROFESSIONAL

THOMAS LENTNER, P.E.
 PROJECT ENGINEER
 (734) 466-4550
 THOMAS.LENTNER@OHM-ADVISORS.COM

GENERAL PROVISIONS

THE IMPROVEMENTS COVERED BY THESE PLANS SHALL BE DONE IN ACCORDANCE WITH THE PROPOSAL AND ACCOMPANYING SPECIFICATIONS FOR THIS PROJECT INCLUDING THE 2020 MICHIGAN DEPARTMENT OF TRANSPORTATION STANDARD SPECIFICATIONS FOR CONSTRUCTION, 2009 MICHIGAN MANUAL OF UNIFORM TRAFFIC CONTROL DEVICES, AND THE MICHIGAN DEPARTMENT OF TRANSPORTATION LOCAL AGENCY PROGRAMS GUIDELINES FOR GEOMETRICS DATED 8-28-08.

THE LOCATION OF ALL PUBLIC UTILITIES SHOWN ON THESE PLANS IS TAKEN FROM THE BEST AVAILABLE DATA. THE TOWNSHIP OF NORTHFIELD WILL NOT BE RESPONSIBLE FOR ANY OMISSION OR VARIATION FROM THE LOCATIONS SHOWN. PURSUANT TO ACTS 173 & 174 OF THE P.A. OF 2013, AS A CONDITION OF THIS CONTRACT, NOTICE SHALL BE GIVEN TO MISS DIG PRIOR TO UNDERGROUND WORK TO BE PERFORMED IN ACCORDANCE WITH THIS CONTRACT. PHONE (800) 482-7171 (OR 811). UTILITY SERVICE CONNECTIONS ARE NOT SHOWN ON THE PLANS AND ARE NOT THE RESPONSIBILITY OF THE TOWNSHIP OF NORTHFIELD.

THE ELEVATIONS SHOWN ON THESE PLANS ARE BASED ON NAVD 1988 VERTICAL DATUM.

APPLICATION DATE	PERMITS	APPROVAL DATE
2/13/2023	WCRC ROW PERMIT	

CONTRACT FOR:
 CONSTRUCTION OF A PARK ENTRANCE, A 19 SPACE PARKING LOT, AND A 1,340 FT NON-MOTORIZED PATH



Advancing Communities

34000 Plymouth Road | Livonia, MI 48150
 P (734) 522-6711 | F (734) 522-6427

PREPARED UNDER THE SUPERVISION OF:



THOMAS LENTNER

6201051096
Registration No.

Date

REVISIONS

PROJECT NO.	SHEET NO.
0151-19-0030	1 OF 14

GENERAL

- 1. THIS PROJECT SHALL BE CONSTRUCTED IN ACCORDANCE WITH THE 2020 MICHIGAN DEPARTMENT OF TRANSPORTATION STANDARD SPECIFICATIONS FOR HIGHWAY CONSTRUCTION EXCEPT AS NOTED HEREIN AND IN THE CONTRACT DOCUMENTS.
2. LIMITATIONS ON PRIVATE WORK: DURING CONSTRUCTION OPERATIONS, THE CONTRACTOR SHALL NOT PERFORM WORK BY PRIVATE AGREEMENT WITH PROPERTY OWNERS ADJACENT TO THE PROJECT, UNLESS GIVEN WRITTEN CONSENT OF THE OWNER.
3. THE CONTRACTOR SHALL CONDUCT OPERATIONS IN SUCH A MANNER TO COMPLY WITH ALL FEDERAL, STATE, AND TOWNSHIP CODES FOR NOISE LEVELS, VIBRATIONS, OR ANY OTHER RESTRICTIONS WHILE REMOVING PAVEMENT OR FOR ANY OTHER CONSTRUCTION OPERATIONS WITHIN THIS CONTRACT TO BE INCLUDED IN THE RESPECTIVE ITEM OF WORK.
4. WHEN THE CONTRACTOR FAILS TO PERFORM THE DUTIES AS CALLED FOR ON THESE PLANS AND IN THE CONTRACT, THE ENGINEER MAY REQUIRE TOWNSHIP FORCES TO PERFORM WORK, OR WITHOUT NOTIFICATION TO THE CONTRACTOR OR THE SURETY, THE CONTRACTOR WILL BE CHARGED EQUIPMENT RENTAL RATES AS ESTABLISHED BY THE TOWNSHIP. TIME CHARGED TO CONTRACTOR SHALL BE FROM THE TIME THAT THE WORKFORCE AND EQUIPMENT LEAVE THE TOWNSHIP YARD TO THE TIME THAT THEY RETURN TO THE TOWNSHIP YARD.
5. ALL AREAS DISTURBED OUTSIDE THE GRADING LIMITS BY THE CONTRACTOR AND/OR HIS SUBCONTRACTOR SHALL BE SEEDED AS SPECIFIED OR DIRECTED BY THE ENGINEER. NO ADDITIONAL PAYMENT OR COMPENSATION WILL BE ALLOWED FOR THIS ACTIVITY. THE CONTRACTOR SHALL BE RESPONSIBLE FOR ANY DAMAGE TO THE PROPERTY BEYOND THE AREAS OF WORK, INCLUDING EXISTING FENCING, LAWN, TREES, SPRINKLER SYSTEMS, AND SHRUBBERY.
6. THE CONTRACTOR SHALL RELOCATE DISTURBED ORNAMENTAL OBJECTS AS DIRECTED BY THE ENGINEER. NO ADDITIONAL PAYMENT OR COMPENSATION WILL BE ALLOWED FOR THIS ACTIVITY.
7. DISTURBED AREAS SHALL BE RESTORED IN ACCORDANCE WITH THE PLANS AND SPECIFICATIONS AND AS DIRECTED BY THE ENGINEER. AREAS FOR SEEDING AND SODDING ARE INDICATED ON THE PLANS.
8. ALL AREAS DISTURBED BY THE CONTRACTOR AND/OR HIS SUBCONTRACTOR BEYOND THE SLOPE STAKE LINE OF THE PROJECT SHALL BE SODDED OR SEEDED AS SPECIFIED OR DIRECTED BY THE ENGINEER. NO ADDITIONAL PAYMENT OR COMPENSATION WILL BE ALLOWED FOR THIS ACTIVITY.
9. THE CONSTRUCTION OF ALL LONGITUDINAL JOINTS IN THE HMA LEVELING AND WEARING COURSES SHALL BE CONSTRUCTED WITH THE USE OF A JOINT MATCHING SHOE.
10. UNTIL THE FINAL ACCEPTANCE OF THE PROJECT, ANY RANDOM, IRREGULARLY CRACKED NEW CONCRETE CURB & GUTTER, CONCRETE PAVEMENT, OR SIDEWALK THAT OCCURS SHALL BE REMOVED AND REPLACED AT THE EXPENSE OF THE CONTRACTOR PRIOR TO OPENING THE PAVEMENT TO TRAFFIC.
11. THE CONTRACTOR WILL BE RESPONSIBLE FOR ANY DAMAGE TO EXISTING PUBLIC OR PRIVATE UTILITIES DURING THE CONSTRUCTION OF THIS PROJECT. ADEQUATE CARE SHALL BE TAKEN AT ALL TIMES.
12. ALL DRIVEWAY OPENINGS SHALL CONFORM TO MDOT SPECIAL DETAIL R-29-I, DETAIL L OR DETAIL M, EXCEPT THE LAYOUT SHALL BE AS SHOWN ON THE PLANS OR AS DIRECTED BY THE ENGINEER.
13. AT LOCATIONS WHERE BARRIER CURBS TERMINATE, THE HEIGHT OF THE BACK OF CURB SHALL TRANSITION FROM FULL HEIGHT TO A HEIGHT OF ONE (1) INCH OVER 10 (10) FEET OR AS DIRECTED BY THE ENGINEER.
14. ANY PERMANENT SIGNS REQUIRING RELOCATION DUE TO THE CONTRACTOR'S OPERATIONS SHALL BE SALVAGED AND RESET BY THE CONTRACTOR AT LOCATIONS DESIGNATED BY THE ENGINEER. SIGNS AND POST DAMAGED DURING THE REMOVAL AND STORAGE OPERATION SHALL BE REPLACED WITH NEW SIGNS AND POST BY THE CONTRACTOR AT THEIR SOLE EXPENSE.
15. THE CONTRACTOR SHALL NOT PARK ANY VEHICLES OR STORE ANY EQUIPMENT AND MATERIALS ON PRIVATE PROPERTY. ALL WORK SHALL BE CONFINED TO THE CONSTRUCTION LIMITS SHOWN ON THE PLANS UNLESS AUTHORIZED IN ADVANCE BY THE ENGINEER.
16. EARTH DISTURBANCE LIMITS FOR THIS PROJECT ARE SHOWN ON THE PLANS. RESTORATION MEASURES HAVE BEEN INCLUDED IN THE PLANS FOR THE APPROVED AREAS OF DISTURBANCE. THE CONTRACTOR SHALL SUBMIT AN EARTH CHANGE PLAN FOR ANY WORK BEYOND THE APPROVED LIMITS TO THE ENGINEER TO REVIEW FOR APPROVAL PRIOR TO THE DISTURBANCE. ALL COSTS FOR OBTAINING AND EXECUTING AN APPROVED EARTH CHANGE PLAN, INCLUDING RESTORATION, SHALL BE AT THE CONTRACTOR'S SOLE EXPENSE.
17. THE CONTRACTOR SHALL MAINTAIN ACCESS FOR POSTAL SERVICE AND REFUSE COLLECTION TO ALL PROPERTIES AT ALL TIMES. ACCESS SHALL ALSO BE MAINTAINED FOR EMERGENCY SERVICES, INCLUDING POLICE, FIRE AND EMERGENCY RESPONSE PERSONNEL AND EQUIPMENT, AT ALL TIMES.

REMOVALS

- 1. SAW CUTTING FOR PAVEMENT REMOVAL AS SHOWN ON THE PLANS OR AS DIRECTED BY THE ENGINEER SHALL BE TO THE DEPTH REQUIRED FOR PROPER REMOVAL OF PAVEMENTS OR CURB.
2. SAWING DEPTH SHALL BE ADEQUATE TO PREVENT SPALLING, CHIPPING, OR DAMAGE TO EXISTING PAVEMENT EDGES LEFT IN PLACE AS DIRECTED BY THE ENGINEER.
3. REMOVALS SHALL BE DONE AS SHOWN ON THE PLANS OR AS DIRECTED BY THE ENGINEER IN FIELD.
4. SIDEWALK REMOVAL LIMITS SHALL BE TO THE NEAREST PANEL. PARTIAL PANEL REMOVALS ARE NOT ACCEPTABLE, UNLESS APPROVED BY THE ENGINEER.
5. CURB SECTION REMOVALS SHALL BE TO THE NEAREST JOINT. PARTIAL CURB SECTION REMOVALS ARE NOT ACCEPTABLE.
6. THE CONTRACTOR SHALL REMOVE THE EXISTING PAVEMENT SURFACE, AS DIRECTED BY THE ENGINEER, TO A SUFFICIENT DEPTH IN ORDER TO CONSTRUCT THE PROPOSED PAVEMENT CROSS-SECTION.
7. PAVEMENT REMOVAL AS SHOWN ON THE PLANS SHALL BE AT THE DISCRETION OF THE ENGINEER. IF IN HIS/HER JUDGEMENT, AREAS OF PAVEMENT MAY BE LEFT IN PLACE, OR ADDITIONAL AREAS ADDED, TO PROVIDE THE PROPER CROSS-SECTION AND BASE, ADJUSTMENTS CAN BE MADE IN THE QUANTITIES.
8. SAW CUTS ARE NOT PAID FOR SEPARATELY BUT SHALL BE INCLUDED IN THE REMOVAL ITEMS.
9. ALL SIGN SALVAGES SHALL BE RESET IMMEDIATELY.

- 10. MISS DIG RULES APPLY PRIOR TO SAW CUTTING AND REMOVAL IF SHALLOW LEADS ARE EXPECTED OR ENCOUNTERED, HAND DIGGING OR POT HOLING OUTSIDE OF THE PAVEMENT, BEHIND THE SECTION OF CURB REMOVAL SHALL BE CONDUCTED AT NO ADDITION EXPENSE TO THE OWNER.

UTILITY NOTES

- 1. FOR PROTECTION OF UNDERGROUND UTILITIES AND CONFORMANCE WITH PUBLIC ACT 53, 1974, THE CONTRACTOR SHALL DIAL 1-800-482-7171 OR 811 A MINIMUM OF THREE FULL WORKING DAYS, EXCLUDING SATURDAYS, SUNDAYS AND HOLIDAYS, PRIOR TO BEGINNING EACH EXCAVATION IN AREAS WHERE PUBLIC UTILITIES HAVE NOT BEEN PREVIOUSLY LOCATED. MEMBERS OF THE 'MISS DIG' ALERT SYSTEM WILL BE ROUTINELY NOTIFIED. THIS DOES NOT RELIEVE THE CONTRACTOR OF THE RESPONSIBILITY OF NOTIFYING UTILITY OWNERS WHO MAY NOT BE PART OF THE 'MISS DIG' ALERT SYSTEM.
2. THE CONTRACTOR WILL BE RESPONSIBLE FOR ANY DAMAGE TO EXISTING PUBLIC OR PRIVATE UTILITIES DURING THE CONSTRUCTION OF THIS PROJECT. ADEQUATE CARE SHALL BE TAKEN AT ALL TIMES.
3. THE LOCATIONS SHOWN FOR ALL PUBLIC UTILITIES, INCLUDING WATER SERVICE AND SANITARY SEWER LEADS ARE BASED ON BEST AVAILABLE INFORMATION. NO GUARANTEE IS MADE REGARDING THE ACCURACY OF THIS INFORMATION. THE CONTRACTOR SHALL PERFORM HIS OWN INVESTIGATION(S) IF HE DESIRES TO IN PERFORMING THE WORK OF THIS PROJECT. PAYMENT FOR 'EXPLORATORY EXCAVATION, TRENCH' WILL NOT BE PAID FOR UNLESS APPROVED IN ADVANCE BY THE ENGINEER.
4. ALL UTILITY WORK, INCLUDING STORM SEWER, SANITARY SEWER AND WATER MAIN, SHALL BE PERFORMED IN ACCORDANCE WITH THE NORTHFIELD TOWNSHIP STANDARD DETAILS.
5. THE CONTRACTOR SHALL PROVIDE A MINIMUM 48-HOUR WRITTEN NOTICE TO ALL PROPERTY OWNERS PRIOR TO THE CLOSURE OF DRIVEWAYS OR THE INTERRUPTION OF TOWNSHIP WATER SERVICE IN THE EVENT OF A WATER MAIN SHUT-DOWN.
6. THE CONTRACTOR SHALL NOTE THAT THERE ARE SELECTED LOCATIONS WHERE STORM STRUCTURES ARE BEING REMOVED AND REPLACED SO AS TO ALIGN WITH THE CONSTRUCTION OF NEW CURB OR ALLOW FOR THE PLACEMENT OF CONCRETE SPILLWAYS. AT THESE LOCATIONS, THERE MAY BE INSTANCES WHERE THE WORK MAY NEED TO BE MODIFIED BY THE ENGINEER TO DEAL WITH SPECIFIC SITE CONDITIONS, INCLUDING ADJUSTING THE LOCATION AND/OR SPECIFIC WORK THAT WILL NEED TO BE PERFORMED. IF THIS IS REQUIRED IN THE OPINION OF THE ENGINEER, ALL WORK WILL BE PERFORMED IN ACCORDANCE WITH THE CONTRACT DOCUMENTS AND PAID FOR AT THE UNIT PRICE(S) FOR THE ACTUAL WORK PERFORMED.
7. THE CONTRACTOR SHALL NOTE THAT SELECTED LOCATIONS ARE BEING IDENTIFIED FOR INSTALLATION OF 'SUBGRADE UNDERDRAIN, 6 INCH,' UNLESS OTHERWISE SPECIFIED ON THE PLANS OR AS DIRECTED BY THE ENGINEER, AT THESE LOCATIONS, PIPE SEGMENTS EQUALING 25 FEET OF 6-INCH SUBGRADE UNDERDRAIN SHALL BE INSTALLED. THIS PROJECT IS NOT PROPOSING THE CONSTRUCTION OF 'CONTINUOUS' SUBGRADE UNDERDRAIN.
8. WHERE STORM SEWER INLETS ARE TO BE PLACED IN F2 CURB AND GUTTER, EAST JORDAN IRON WORKS 7045 CASTINGS AND TYPE 'M2' SINUSOIDAL COVERS ARE TO BE USED. AT ALL OTHER LOCATIONS WHERE INLETS ARE TO BE CONSTRUCTED, EAST JORDAN IRON WORKS 5080 CASTINGS AND TYPE 'M2' SINUSOIDAL COVERS ARE TO BE USED.
9. THE RECONSTRUCTION OF STRUCTURES, BEYOND 'STRUCTURE ADJUSTMENT', SHALL BE AS DIRECTED BY THE ENGINEER.

FLAGGING OPERATIONS

THE CONTRACTOR AND ANY SUBCONTRACTORS WHO WILL BE USING A FLAGGING OPERATION FOR THIS PROJECT SHALL BE REQUIRED TO PROVIDE SATISFACTORY DOCUMENTATION PROVING THAT THEY HAVE MET THE MINIMUM REQUIREMENTS SET FORTH IN SECTION 812 OF THE 2020 DOT STANDARD SPECIFICATIONS FOR CONSTRUCTION. FAILURE TO PROVIDE DOCUMENTATION WILL RESULT IN THE ROAD AUTHORITY WITHHOLDING PAYMENT FOR FLAGGING OPERATIONS. THE CONTRACTOR SHALL FOLLOW THE TRAFFIC CONTROL MEASURES OUTLINED BY THE MDOT PLAN M140a.

TREE PRESERVATION & REMOVAL

TREE REMOVAL SHALL NOT COMMENCE IN ANY GIVEN AREA UNTIL AFTER APPROVAL TO DO SO IS GIVEN BY THE ENGINEER. TREES REMOVED BY THE CONTRACTOR THAT WERE NOT CLEARLY MARKED AND INTENDED FOR REMOVAL SHALL BE REPLACED WITH 2 1/2" TO 3" DIAMETER PLANTINGS OF A SIMILAR SPECIES AT THE CONTRACTOR'S EXPENSE, REPLACEMENT TREES SHALL BE PROVIDED SUCH THAT THE SUM OF THE DIAMETERS OF THE REPLACEMENT TREES EQUALS THE DIAMETER OF THE TREES REMOVED. TEMPORARY FENCE SHALL BE ERECTED AROUND TREES THAT ARE TO BE SAVED PRIOR TO THE START OF CONSTRUCTION. NO EQUIPMENT, REMOVAL DEBRIS, LITTER ETC. SHALL BE STORED WITHIN DRIP LINE OF EXISTING TREES TO REMAIN. FOR EXISTING TREES TO BE PRESERVED, ANY WORK REQUIRED WITHIN THE DRIP LINE OF THE TREE SHALL BE DONE BY HAND SO AS TO ENSURE NO OR MINIMAL DISTURBANCE AND COMPACTION TO EXISTING SURFACE ROOTS OF TREE.

HAND FINISHING

HAND FINISHING OF CONCRETE POURS TO BE STRUCK OFF AND CONSOLIDATED BY HAND METHODS WILL BE PERMITTED ON VARIABLE WIDTH LANES AND LANES FORMED BY FLEXIBLE FORMS FOR SHORT RADIUS CURVES AS DIRECTED BY THE ENGINEER.

SOIL EROSION MEASURES

PLACE PERMANENT SEED AND MULCH AS SOON AS POSSIBLE. CRITICAL DITCH GRADES SHOULD BE PROTECTED WITH EITHER SOD OR SEED/MULCH AS DIRECTED BY THE ENGINEER. REFER TO PLANS AND STANDARD DETAILS FOR SOIL EROSION DETAILS.

CONCRETE PAVEMENT/CURB AND GUTTER

THE CONCRETE MIX SHALL BE GRADE P1 IN ACCORDANCE WITH SECTION 601 OF THE 2020 MDOT STANDARD SPECS FOR CONSTRUCTION.

ADJUSTING MONUMENT BOXES

IT IS THE INTENT THAT ALL GOVERNMENT CORNERS ON THIS PROJECT BE PRESERVED AND THAT, WHERE NECESSARY, MONUMENT BOXES BE PLACED OR ADJUSTED, WHETHER SHOWN OR NOT. PRESERVING MONUMENT BOXES SHALL BE PERFORMED IN ACCORDANCE WITH THE MICHIGAN DEPARTMENT OF TRANSPORTATION 2020 STANDARD SPECIFICATIONS FOR CONSTRUCTION.

DUST CONTROL

THE CONTRACTOR IS RESPONSIBLE FOR CONTROLLING DUST ON THE PROJECT BY SPRAYING WATER ON ANY AGGREGATE OR UNRESTORED SURFACES AS NEEDED OR AS REQUESTED BY THE ENGINEER. ALL COSTS FOR THIS OPERATION SHALL BE INCLUDED CONTRACT PAY ITEMS AND WILL NOT BE PAID FOR SEPARATELY.

SIDEWALK

ADDITIONAL SIDEWALK MAY BE ADDED BY THE ENGINEER TO THE SCOPE OF THE PROJECT PRIOR TO CONSTRUCTION. ANY SIDEWALK DAMAGED BY THE CONTRACTOR NOT MARKED FOR REMOVAL ON THE PLANS SHALL BE REPLACED AT THE COST OF THE CONTRACTOR.

UTILITIES

THE FOLLOWING UTILITY COMPANIES HAVE FACILITIES WITHIN THE PROJECT LIMITS:

- 1. FOR STORM SEWER: NORTHFIELD TOWNSHIP ATT: BRIAN MACDONALD PH: 734-449-2880 EXT. 161
2. FOR ELECTRIC: DETROIT EDISON ATTN: PH: (313) 407-5364
3. FOR GAS: CONSUMERS ENERGY ATTN: PH: (800) 477-5050
4. FOR TELEPHONE: AT&T ATTN: PH: (231) 409-7939
5. FOR CABLE TELEVISION: CHARTER COMMUNICATIONS ATTN: PH: (800) 778-9140
6. FOR FIBER OPTICS: CHARTER COMMUNICATIONS ATTN: PH: (800) 778-9140

NOTE: REFER TO SHEET 8 (UTILITY PLAN/SOIL EROSION & SEDIMENTATION CONTROLS) FOR THE LOCATIONS OF THE INLET PROTECTION FABRIC DROPS.

MISCELLANEOUS QUANTITIES

Table with 3 columns: TOTAL, UNIT, DESCRIPTION. Rows include Mobilization, Max (0.267 Acre), Clearing (2 Sta), Earthwork (38 Cyd), Subgrade Undercutting, Type II (1 LSUM), Minor Traf Devices (16 Sta), Restoration (2000 Dir), Permit Allowance.

OHM ARCHITECTS ENGINEERS PLANNERS 34000 Plymouth Road Livonia, MI 48150 P (734) 522-6711 | F (734) 522-6427 OHM-ADVISORS.COM

REVISIONS: (Empty table for revisions)

VERT DATUM NAVD83 HORIZ DATUM NAD83 SCALE H: 1"=40' V: 1"=4' CITY/VILLAGE/TOWNSHIP NORTHFIELD TOWNSHIP COUNTY WASHINGTON STATE CADD KS PROJ INGR MI PROJ NUMBER 015-19-008 ENG MI DATE 01-19-2023

NORTHFIELD TOWNSHIP COMMUNITY PARK - PATHWAYS AND PARKING NOTES

DRAWING PATH: P:\0126_01650015190030_NorthVillageDrawings\Civil\Misc\190030\LEG_NOT.dwg Feb. 19, 2023 - 12:14pm

COPYRIGHT 2017 OHM ALL DRAWINGS AND WRITTEN MATERIALS APPEARING HEREIN CONSTITUTE THE ORIGINAL AND UNPUBLISHED WORK OF OHM AND THE SAME MAY NOT BE DUPLICATED, DISTRIBUTED, OR DISCLOSED WITHOUT PRIOR WRITTEN CONSENT OF OHM

WATER & SEWER UTILITY SYMBOLS

EXISTING

- STORM MANHOLE
- SQUARE CATCH BASIN
- ROUND CATCH BASIN
- CULVERT
- CULVERT W/O END SECTION
- CULVERT W/END SECTION
- SANITARY MANHOLE
- CLEAN OUT
- GATE VALVE & WELL
- GATE VALVE & BOX
- WATER STOP BOX
- FIRE HYDRANT
- METER PIT
- WATER METER
- SPRINKLER HEAD
- IRRIGATION VALVE

PROPOSED

- STORM MANHOLE
- INLET/CATCH BASIN
- CULVERT END SECTION
- SANITARY MANHOLE
- GATE VALVE & WELL
- GATE VALVE & BOX
- TAPPING SLEEVE VALVE & WELL
- TAPPING SLEEVE VALVE & BOX
- FIRE HYDRANT

REAL ESTATE SYMBOLS

- CONTIGUOUS PROPERTY SYMBOL
- PARCEL NUMBER BOX
- NO ROW IMPACTS

MISCELLANEOUS UTILITY SYMBOLS

EXISTING

- GUY WIRE
- GUY POLE
- UTILITY POLE
- UTILITY POLE W/LIGHT
- LIGHT/DECOR LAMP POLE
- FLOOD LIGHT
- GAS VALVE
- GAS VENT
- GAS METER
- GAS RISER
- TRAFFIC SIGNAL
- PEDESTRIAN RISER
- TRANSFORMER PAD
- PRIVATE UTILITY MANHOLE
- RAILROAD CROSSING
- ELECTRIC METER
- PHONE BOOTH
- TRAFFIC SIGNAL CONTROLLER
- HAND HOLE
- ELECTRIC RISER
- TELEPHONE RISER
- CABLE TV RISER
- MONITORING WELL
- UNDERGROUND MARKER

MISCELLANEOUS SYMBOLS

EXISTING

- RIPRAP
- SIGN
- FLOW DIRECTION
- STUMP
- WETLAND
- CONIFEROUS TREE
CL 1 1" TO 5"
CL 2 6" TO 17"
CL 3 18" TO 35"
CL 4 36" AND UP
- DECIDUOUS TREE
- CONIFEROUS SHRUB
- DECIDUOUS SHRUB
- POST
- SECTION CORNER
- MONUMENT
- IRON ROD/PIPE
- PK NAIL
- BENCHMARK
- TRAVERSE POINT
- MAIL/NEWSPAPER BOX
- FLAG POLE
- DISC GOLF BASKET
- DISC GOLF TEE BOXES

HAZARDOUS OR FLAMMABLE MATERIAL

USED WITH UNDERGROUND GAS & ELECTRICAL LINES

CAUTION - CRITICAL UNDERGROUND UTILITY

USED WITH TELEPHONE & FIBER OPTIC LINES

PROPOSED

- RIPRAP
- SIGN
- FLOW DIRECTION
- STRUCTURE NUMBER
WM SAN STM
- ADA SIDEWALK RAMP

UTILITY PATTERN

EXISTING

- ELECTRICAL *
- GAS\OIL
- CABLE/TELEPHONE *
- FIBER OPTIC *
- WATER
- SANITARY
- STORM

PROPOSED

- STORM/SANITARY/WATER
 - PRIMARY UTILITY WILL HAVE A CONTINUOUS LINESTYLE, WITH THE SECONDARY UTILITY MATCHING ITS RESPECTIVE EXISTING UTILITY LINESTYLE
- *O.H. = OVERHEAD , U.G. = UNDERGROUND

ROW PATTERN

EXISTING

- ROW
- SECTION
- PROPERTY/PARCEL

PROPOSED

- ROW

TOPO PATTERN

EXISTING

- HEDGE/TREE
- FENCE
- GUARDRAIL
- CENTERLINE OF DITCH
- RAILROAD
- WETLAND/EDGE OF WATER

PROPOSED

- GRADING LIMIT (SLOPE STAKE)
- CENTERLINE OF DITCH
- GUARDRAIL
- FENCE

REMOVAL LEGEND

- SIDEWALK REMOVAL
- HMA SURFACE REMOVAL
- PAVEMENT REMOVAL
- COLD MILLING HMA SURFACE
- HMA BASE CRUSHING AND SHAPING
- EXCAVATION, EARTH, MODIFIED
- CURB AND GUTTER, REM
- TREE, REM
- SALVAGE
- BULKHEAD
- ABANDON
- REMOVE
- ADJUST
- RELOCATE
- RECONSTRUCT
- REMOVE BY OTHERS
- ADJUST BY OTHERS
- RELOCATE BY OTHERS

IF NECESSARY FOR CLARITY

- SALVAGE
- BULKHEAD
- ABANDON
- CLEARING
- REMOVE
- RELOCATE
- RECONSTRUCT
- RELOCATE BY OTHERS
- ADJUST BY OTHERS

SPECIAL LEGEND

OHM
ARCHITECTS ENGINEERS PLANNERS
34000 Plymouth Road
Livonia, MI 48150
P (734) 522-6711 | F (734) 522-6427
OHM-ADVISORS.COM

REVISIONS:

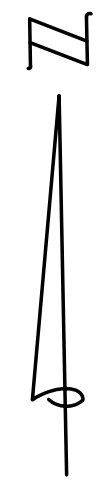
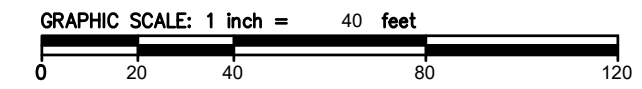
DATE	PROJ NUMBER	ENG	PROJ MGR	CADD	COUNTY	CITY/VILLAGE/TOWNSHIP	SCALE	VERT DATUM
###	015-19-000	MM	MM	AS	WASHINGTON	NORTHFIELD TOWNSHIP	1"=40'	NAVD88

**NORTHFIELD TOWNSHIP
COMMUNITY PARK - PATHWAYS AND PARKING
LEGEND**

DRAWING PATH: P:\0126_01650151\900303_NorthVillageDrawings\Civil\Misc\1900303\LEG_NOT.dwg Feb 10, 2023 - 11:23am

COPYRIGHT 2017 OHM ALL DRAWINGS AND WRITTEN MATERIALS APPEARING HEREIN CONSTITUTE THE ORIGINAL AND UNPUBLISHED WORK OF OHM AND THE SAME MAY NOT BE DUPLICATED, DISTRIBUTED, OR DISCLOSED WITHOUT PRIOR WRITTEN CONSENT OF OHM

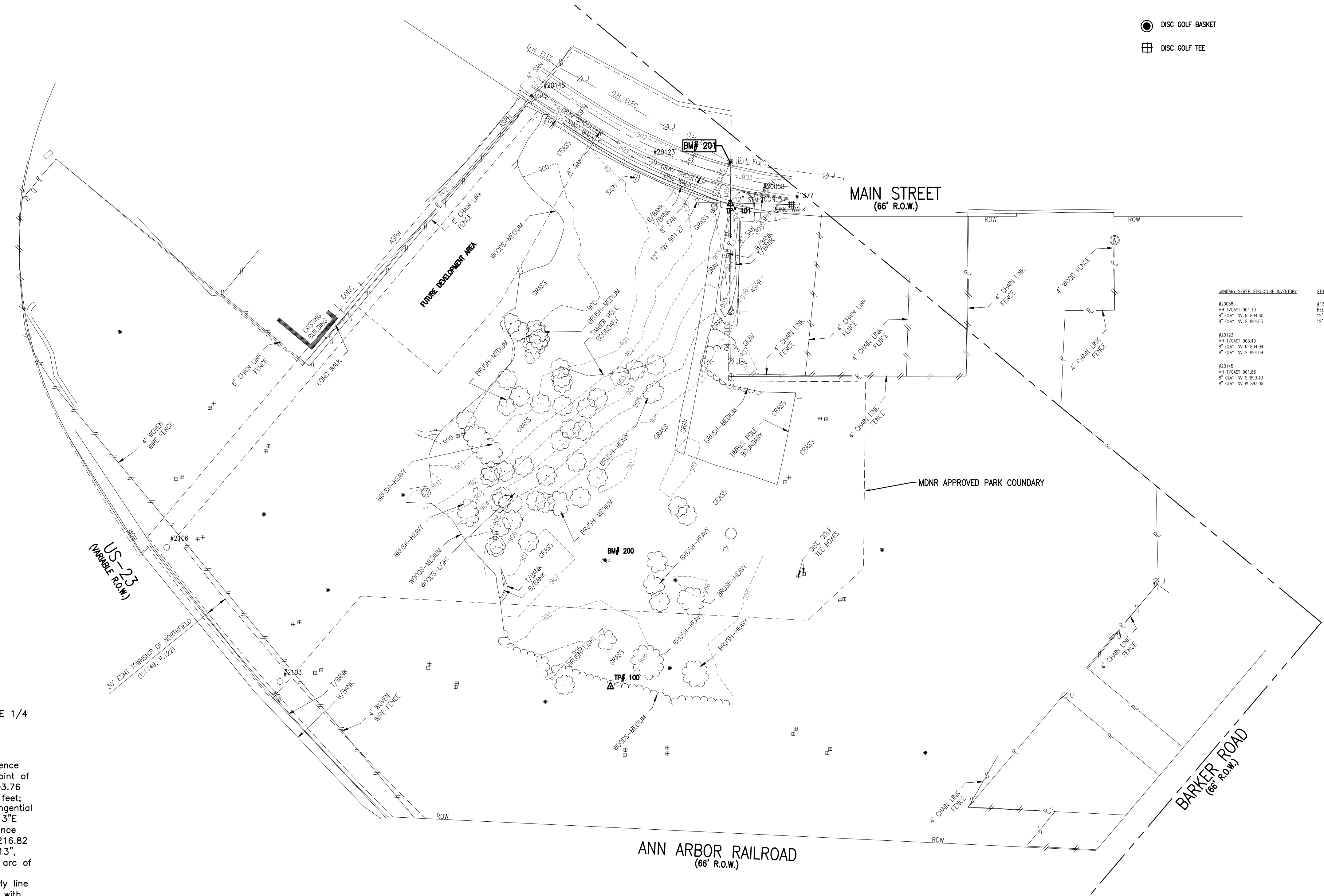
JOB BENCHMARK # 200 SET COTTON SPINDLE IN S'LY FACE OF TWIN STUMP, 18" ELEV 908.63
JOB BENCHMARK # 201 SET COTTON SPINDLE IN W FACE OF POWER POLE ON E SIDE OF MAIN ST ACCROSS FROM PARK DR ELEV 903.09
TRAVERSE POINT # 100 N 337470.321 E 13285365.540 ELEV 905.97
TRAVERSE POINT # 101 N 337786.090 E 13285960.880 ELEV 903.94



ARCHITECTS ENGINEERS PLANNERS

34000 Plymouth Road
Livonia, MI 48150
P (734) 522-6711 | F (734) 522-6427

OHM-ADVISORS.COM



- DISC GOLF BASKET
- ⊞ DISC GOLF TEE

SANITARY SEWER STRUCTURE INVENTORY	STORM SEWER STRUCTURE INVENTORY
#20058 MH 1/CAST 804.10 8" CLAY INV N 884.00 8" CLAY INV S 884.65	#1377 BEHIVE CB 1/CAST 903.73 12" RCP IN INV 901.68 12" RCP S INV 901.68
#20133 MH 1/CAST 803.49 8" CLAY INV N 884.04 8" CLAY INV S 884.09	
#20145 MH 1/CAST 801.88 8" CLAY INV S 883.43 8" CLAY INV W 883.38	

LEGAL DESCRIPTION
 A parcel of land being a part of the NW 1/4 of Section 5 and NE 1/4 of Section 6, Town 1 South, Range 6 East, Northfield Township, Washtenaw County, Michigan, more particularly described as follows:

Commencing at the East 1/4 corner of said Section 6; thence N02°04'05"W 623.94 feet along the East line of said Section 6; thence S49°21'55"W 63.50 feet; thence N41°46'26"W 134.0 feet to the Point of Beginning; thence S48°35'31"W 252.83 feet; thence N85°10'00"W 103.76 feet; thence N38°55'30"W 606.94 feet; thence S88°39'00"W 184.84 feet; thence 268.0 feet along the arc of a 3668.03 foot radius non-tangential circular curve to the right, delta 04°11'10", chord bearing N08°52'13"E 267.94 feet along the Easterly line of U.S. 23 (variable width); thence S88°39'00"W 16.39 feet; thence 187.15 feet along the arc of a 2216.82 foot radius non-tangential circular curve to the right, delta 04°50'13", chord bearing N16°35'20"E 187.09 feet and 335.51 feet along the arc of a 528.11 foot radius compound circular curve to the right, delta 36°24'02", chord bearing N37°12'30"E 329.90 feet along the Easterly line of U.S. 23 (variable width); thence N88°39'00"E 70.66 feet parallel with the East-West 1/4 line of said Section 6; thence S02°04'05"E 436.0 feet; thence N88°39'00"E 560.45 feet parallel with the East-West 1/4 line of said Section 6 to Reference Point "A"; thence continuing N88°39'00"E 4 feet, more or less, to the water's edge of Whitmore Lake; thence Southeasterly 234 feet, more or less, along the Westerly water's edge of Whitmore Lake; thence S48°35'31"W 7.5 feet, more or less, to Reference Point "B" which bears S12°55'30"E 172.86 feet and S33°56'40"E 65.56 feet from said Reference Point "A"; thence S48°35'31"W 352.74 feet; thence S41°46'26"E 186.0 feet to the Point of Beginning.

Contains 562,170 square feet or 12.91 acres of land, more or less. Subject to all easements and restrictions of record, if any.

ISSUE: MDNE GRANT PROJECT
 REVISIONS:

DATE	PROJ NUMBER	ENG ARCH	PROJ MGR	CADD	COUNTY	MUNICIPALITY
	015-19-030	MM	MM	XB	WASHTENAW	NORTHFIELD TOWNSHIP

**NORTHFIELD TOWNSHIP
 COMMUNITY PARK - PATHWAYS AND PARKING
 EXISTING CONDITIONS**



Know what's below.
 Call before you dig.

DRAWING PATH: P:\0126_0165015190030_NorthfieldDrawings\Civil\Topo\190030SJR.dwg Feb 10, 2023 - 11:24am

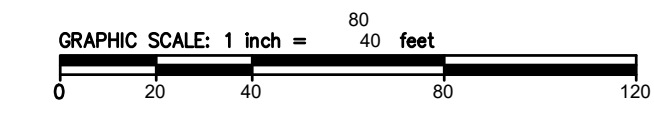
COPYRIGHT 2019 OHM ALL DRAWINGS AND WRITTEN MATERIALS APPEARING HEREIN CONSTITUTE THE ORIGINAL AND UNPUBLISHED WORK OF OHM AND THE SAME MAY NOT BE DUPLICATED, DISTRIBUTED, OR DISCLOSED WITHOUT PRIOR WRITTEN CONSENT OF OHM

JOB BENCHMARK # 200
SET COTTON SPINDLE IN
S'LY FACE OF TWIN STUMP, 18"
ELEV 908.63

JOB BENCHMARK # 201
SET COTTON SPINDLE IN W FACE
OF POWER POLE ON E SIDE OF
MAIN ST ACCROSS FROM PARK DR
ELEV 903.09

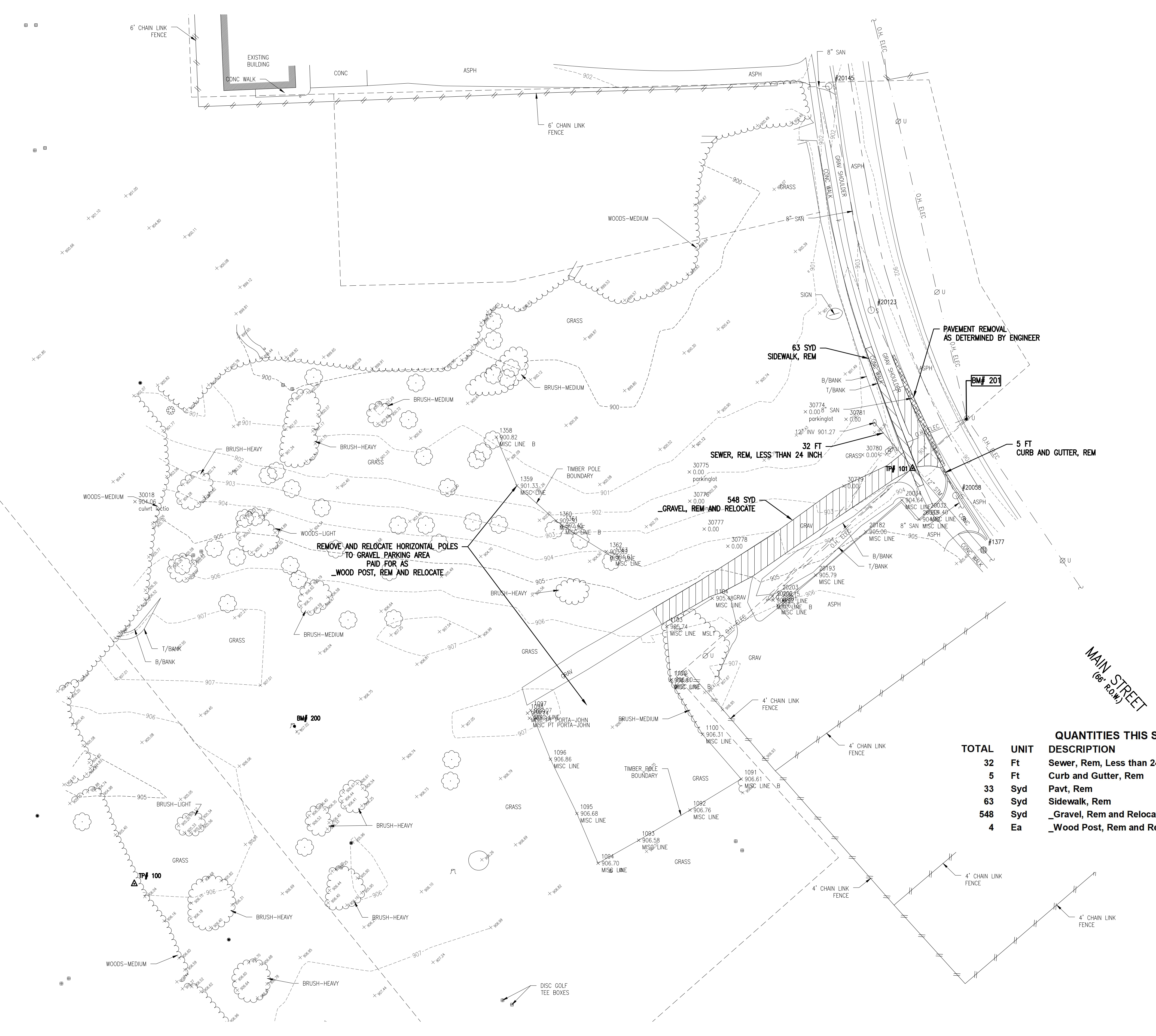
TRAVERSE POINT # 100
N 337470.321
E 13285365.540 ELEV 905.97

TRAVERSE POINT # 101
N 337786.090
E 13285960.880 ELEV 903.94



LEGEND

- GRAVEL REMOVAL
- SIDEWALK REMOVAL
- PAVEMENT REMOVAL
- CURB REMOVAL
- TREE REMOVAL
- LIGHTS TO BE REMOVED
- ABANDON
- RELOCATE
- REMOVE
- SALVAGE
- ADJUST



TOTAL	UNIT	DESCRIPTION
32	Ft	Sewer, Rem, Less than 24 inch
5	Ft	Curb and Gutter, Rem
33	Syd	Pavt, Rem
63	Syd	Sidewalk, Rem
548	Syd	_Gravel, Rem and Relocate
4	Ea	_Wood Post, Rem and Relocate

DRAWING PATH: P:\0126_01650151\00030_NorthfieldDrawings\Civil\Removal\1903030REM.dwg Feb 10, 2023 - 11:25am

ISSUE: MIDRE GRANT PROJECT
REVISIONS: _____

MUNICIPALITY: NORTHFIELD TOWNSHIP
COUNTY: WASHTENAW
CADD: AS

PROJECT: NORTHFIELD TOWNSHIP
COMMUNITY PARK - PATHWAYS AND PARKING
REMOVAL PLAN

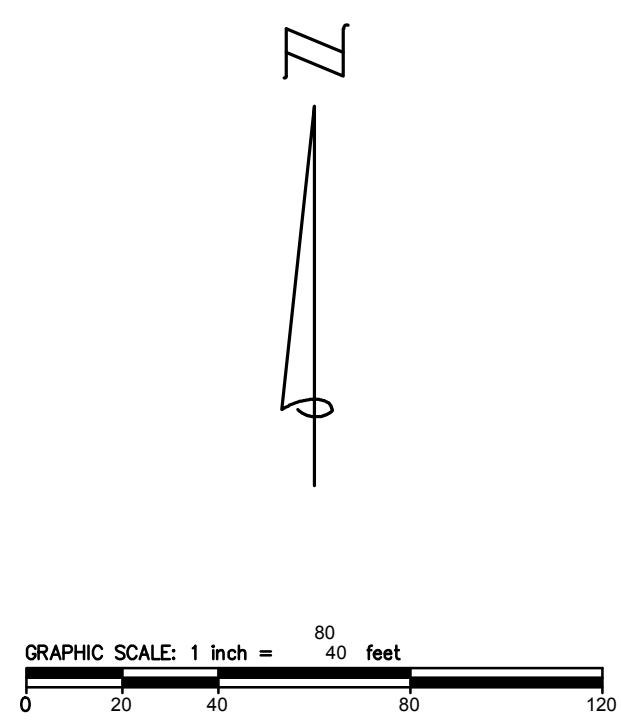
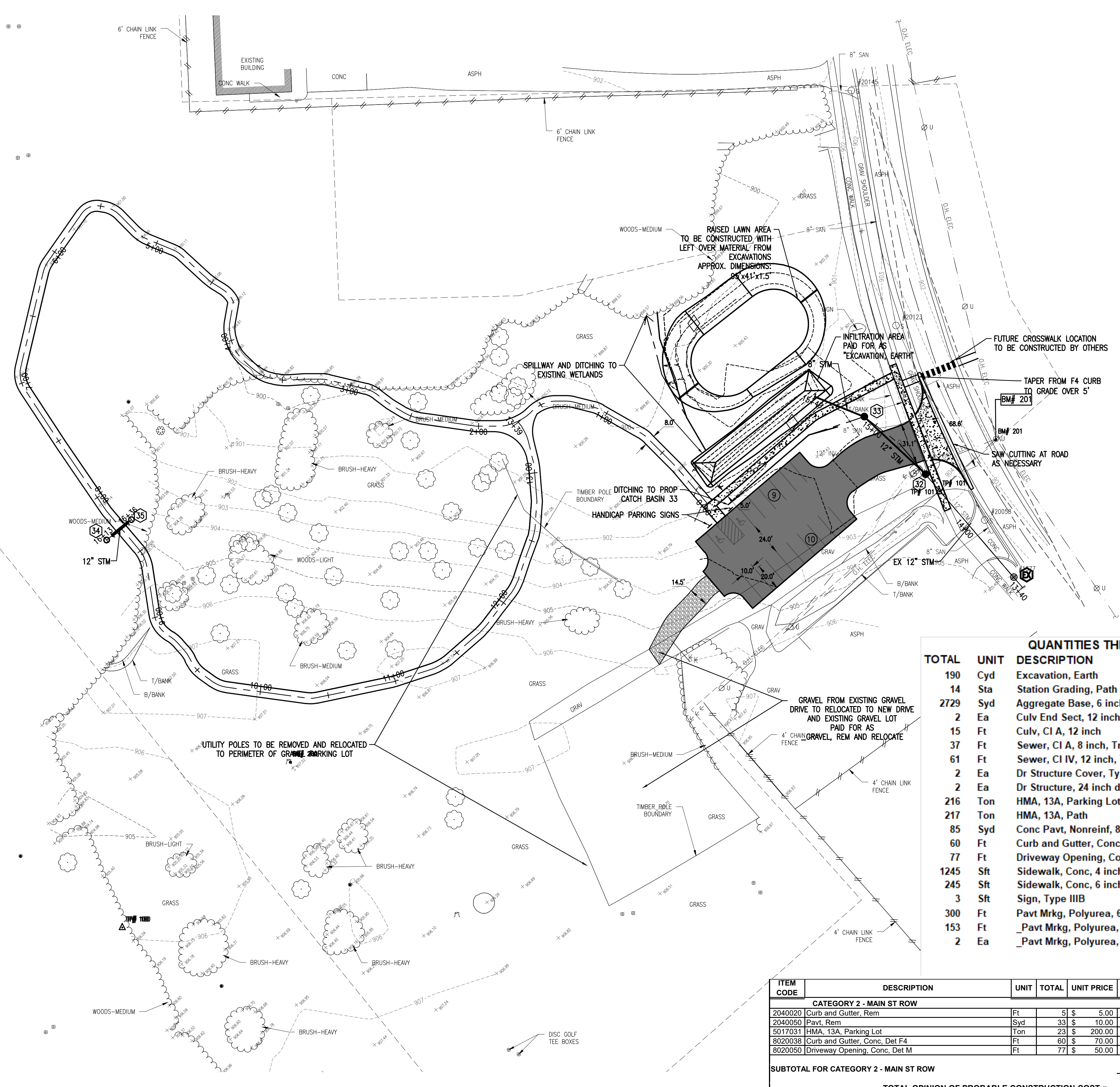


JOB BENCHMARK # 200
SET COTTON SPINDLE IN
S'LY FACE OF TWIN STUMP, 18"
ELEV 908.83

JOB BENCHMARK # 201
SET COTTON SPINDLE IN W FACE
OF POWER POLE ON E SIDE OF
MAIN ST ACCROSS FROM PARK DR
ELEV 903.09

TRAVERSE POINT # 100
N 337470.321
E 13285365.540 ELEV 905.97

TRAVERSE POINT # 101
N 337786.090
E 13285960.880 ELEV 903.94



- LEGEND**
- (XX) PROPOSED PARKING COUNT
 - [Grey Box] PROPOSED ASPHALT PARKING LOT
 - [White Box] PROPOSED ASPHALT PATH
 - [Dotted Box] PROPOSED CONCRETE
 - [Patterned Box] PROPOSED GRAVEL

QUANTITIES THIS SHEET

TOTAL	UNIT	DESCRIPTION
190	Cyd	Excavation, Earth
14	Sta	Station Grading, Path
2729	Syd	Aggregate Base, 6 inch
2	Ea	Culv End Sect, 12 inch
15	Ft	Culv, CI A, 12 inch
37	Ft	Sewer, CI A, 8 inch, Tr Det A
61	Ft	Sewer, CI IV, 12 inch, Tr Det B
2	Ea	Dr Structure Cover, Type G
2	Ea	Dr Structure, 24 inch dia
216	Ton	HMA, 13A, Parking Lot
217	Ton	HMA, 13A, Path
85	Syd	Conc Pavt, Nonreinf, 8 inch
60	Ft	Curb and Gutter, Conc, Det F4
77	Ft	Driveway Opening, Conc, Det M
1245	Sft	Sidewalk, Conc, 4 inch
245	Sft	Sidewalk, Conc, 6 inch
3	Sft	Sign, Type IIIB
300	Ft	Pavt Mrkg, Polyurea, 6 inch, Yellow
153	Ft	Pavt Mrkg, Polyurea, 6 inch, Blue
2	Ea	Pavt Mrkg, Polyurea, Accessible Sym

ITEM CODE	DESCRIPTION	UNIT	TOTAL	UNIT PRICE	COST
CATEGORY 2 - MAIN ST ROW					
2040020	Curb and Gutter, Rem	Ft	5	\$ 5.00	\$ 25.00
2040050	Pavt, Rem	Syd	33	\$ 10.00	\$ 330.00
5017031	HMA, 13A, Parking Lot	Ton	23	\$ 200.00	\$ 4,600.00
8020038	Curb and Gutter, Conc, Det F4	Ft	60	\$ 70.00	\$ 4,200.00
8020050	Driveway Opening, Conc, Det M	Ft	77	\$ 50.00	\$ 3,850.00
SUBTOTAL FOR CATEGORY 2 - MAIN ST ROW					\$ 13,005.00
TOTAL OPINION OF PROBABLE CONSTRUCTION COST =					\$ 13,005.00

DRAWING PATH: P:\0126_0165015190030_NorthVillageDrawings\CivilPlans_Constr\190303CON.dwg Feb 10, 2023, 11:46am

ISSUE: MDNE GRANT PROJECT
REVISIONS: _____

MUNICIPALITY: NORTHFIELD TOWNSHIP
COUNTY: WASHTENAW
CADD: MS

DATE: 015-19-2020
PROJ INGR: MM
ENGR: MM

NORTHFIELD TOWNSHIP
COMMUNITY PARK - PATHWAYS AND PARKING
SITE LAYOUT PLAN

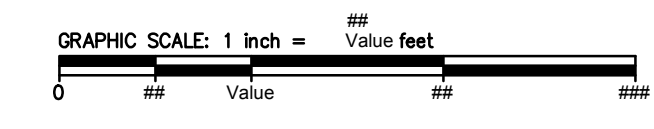
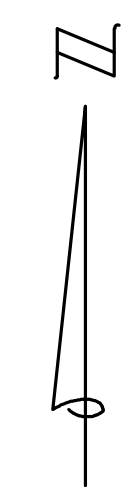


JOB BENCHMARK # 200
SET COTTON SPINDLE IN
S'LY FACE OF TWIN STUMP, 18"
ELEV 908.83

JOB BENCHMARK # 201
SET COTTON SPINDLE IN W FACE
OF POWER POLE ON E SIDE OF
MAIN ST ACCROSS FROM PARK DR
ELEV 903.09

TRAVERSE POINT # 100
N 337470.321
E 13285365.540 ELEV 905.97

TRAVERSE POINT # 101
N 337788.090
E 13285960.880 ELEV 903.94



OHM
ARCHITECTS ENGINEERS PLANNERS

34000 Plymouth Road
Livonia, MI 48150
P (734) 522-6711 | F (734) 522-6427

OHM-ADVISORS.COM



DRAWING PATH: P:\0126_01650151\0030_NorthVillageDrawings\Civil\Grading\00030GRD.dwg Feb 10, 2023 - 11:51am



Know what's below.
Call before you dig.

ISSUE / MODIFIED PROJECT
REVISIONS

DATE	PROJ NUMBER	ENGR	MM	MM	PROJ INGR	MM	MM	CADD	MM	MM	COUNTY	WASHTENAW	MUNICIPALITY	NORTHFIELD TOWNSHIP
NORTHFIELD TOWNSHIP COMMUNITY PARK - PATHWAYS AND PARKING DETAILED GRADING PLAN 2+50 TO 8+50														

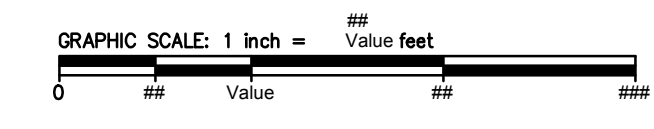
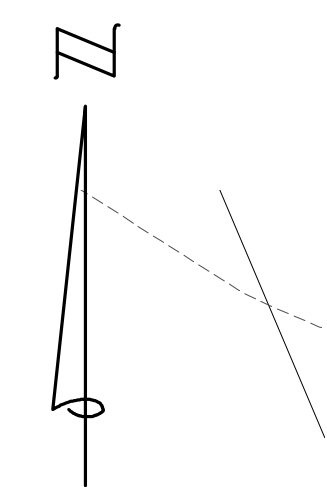
COPYRIGHT 2019 OHM ALL DRAWINGS AND WRITTEN MATERIALS APPEARING HEREIN CONSTITUTE THE ORIGINAL AND UNPUBLISHED WORK OF OHM AND THE SAME MAY NOT BE DUPLICATED, DISTRIBUTED, OR DISCLOSED WITHOUT PRIOR WRITTEN CONSENT OF OHM

JOB BENCHMARK # 200
SET COTTON SPINDLE IN
S'LY FACE OF TWIN STUMP, 18"
ELEV 908.83

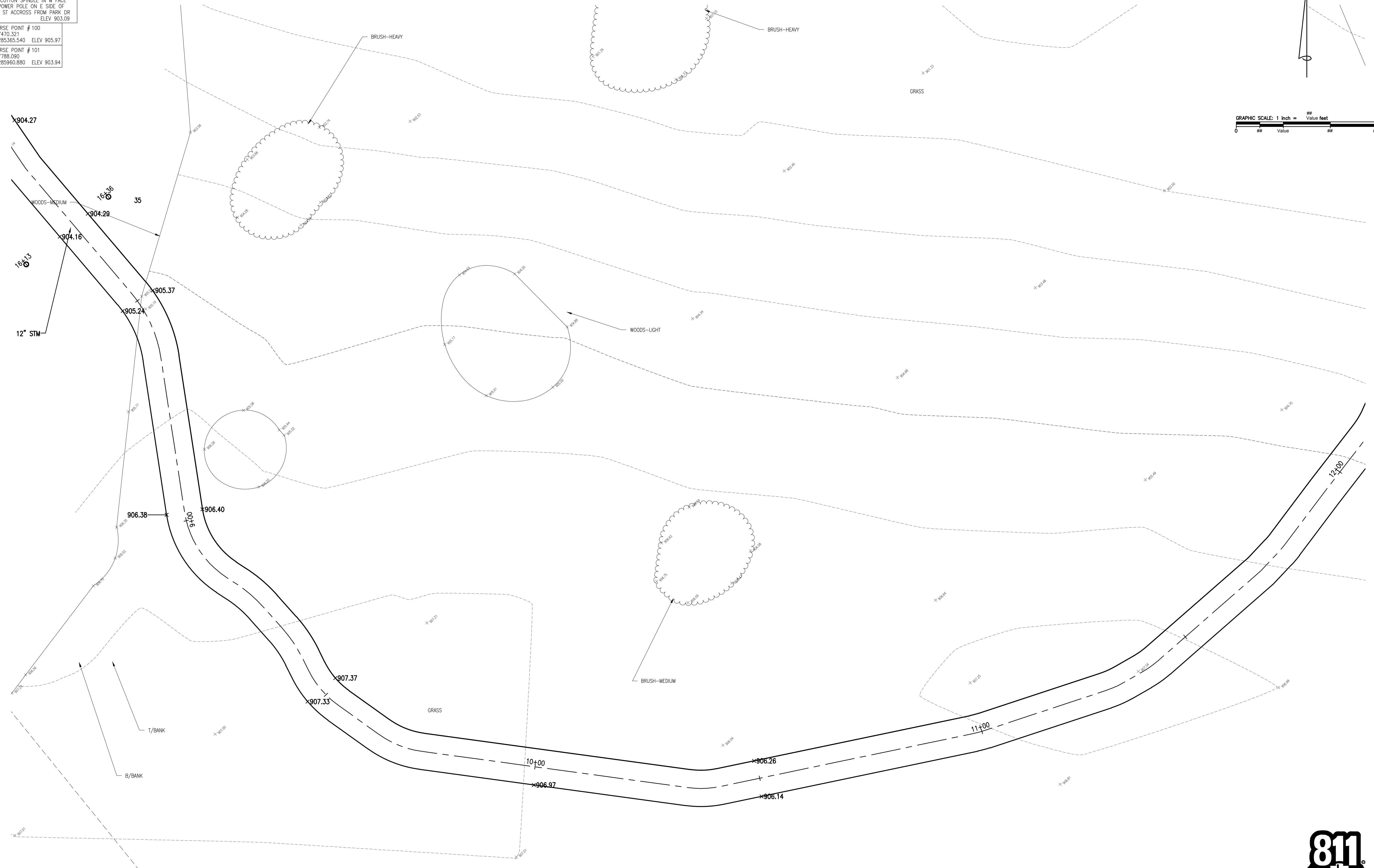
JOB BENCHMARK # 201
SET COTTON SPINDLE IN W FACE
OF POWER POLE ON E SIDE OF
MAIN ST ACCROSS FROM PARK DR
ELEV 903.09

TRAVERSE POINT # 100
N 337470.321
E 13285365.540 ELEV 905.97

TRAVERSE POINT # 101
N 337788.090
E 13285960.880 ELEV 903.94



OHM
ARCHITECTS ENGINEERS PLANNERS
34000 Plymouth Road
Livonia, MI 48150
P (734) 522-6711 | F (734) 522-6427
OHM-ADVISORS.COM



DRAWING PATH: P:\0126_01650151\00030_NorthVillageDrawings\Civil\Grading\00030GRD.dwg Feb 10, 2023 - 11:53am

ISSUE - MDNE GRANT PROJECT
REVISIONS

DATE	PRO NUMBER	ENGARCH	PRO INGR	CADD	COUNTY	MANICIPALITY
Value	015-19-000	MM	MM	MS	WASHINGTON	NORTHFIELD TOWNSHIP

**NORTHFIELD TOWNSHIP
COMMUNITY PARK - PATHWAYS AND PARKING
DETAILED GRADING PLAN**
8-50 TO 12+00



COPYRIGHT 2019 OHM ALL DRAWINGS AND WRITTEN MATERIALS APPEARING HEREIN CONSTITUTE THE ORIGINAL AND UNPUBLISHED WORK OF OHM AND THE SAME MAY NOT BE DUPLICATED, DISTRIBUTED, OR DISCLOSED WITHOUT PRIOR WRITTEN CONSENT OF OHM

JOB BENCHMARK # 200
SET COTTON SPINDLE IN
S'LY FACE OF TWIN STUMP, 18"
ELEV 908.83

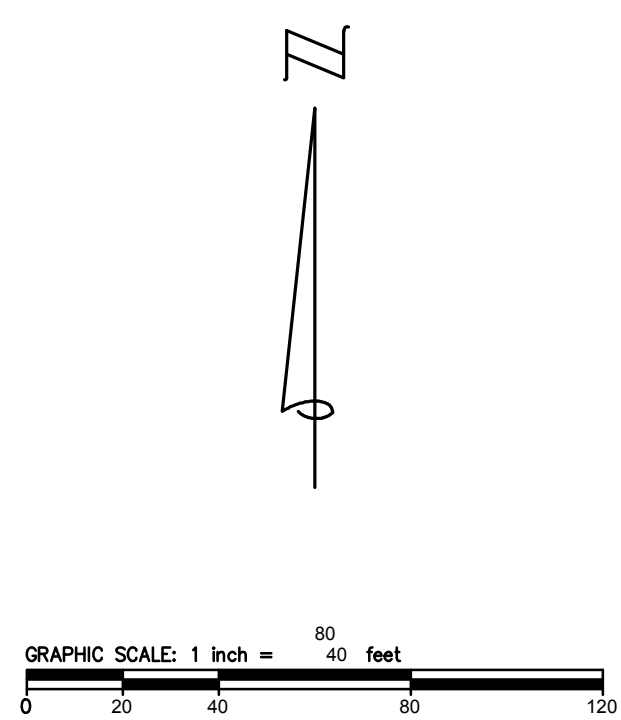
JOB BENCHMARK # 201
SET COTTON SPINDLE IN W FACE
OF POWER POLE ON E SIDE OF
MAIN ST ACROSS FROM PARK DR
ELEV 903.09

TRAVERSE POINT # 100
N 337470.321
E 13285365.540 ELEV 905.97

TRAVERSE POINT # 101
N 337788.090
E 13285960.880 ELEV 903.94

PROPOSED PROJECT SCHEDULE

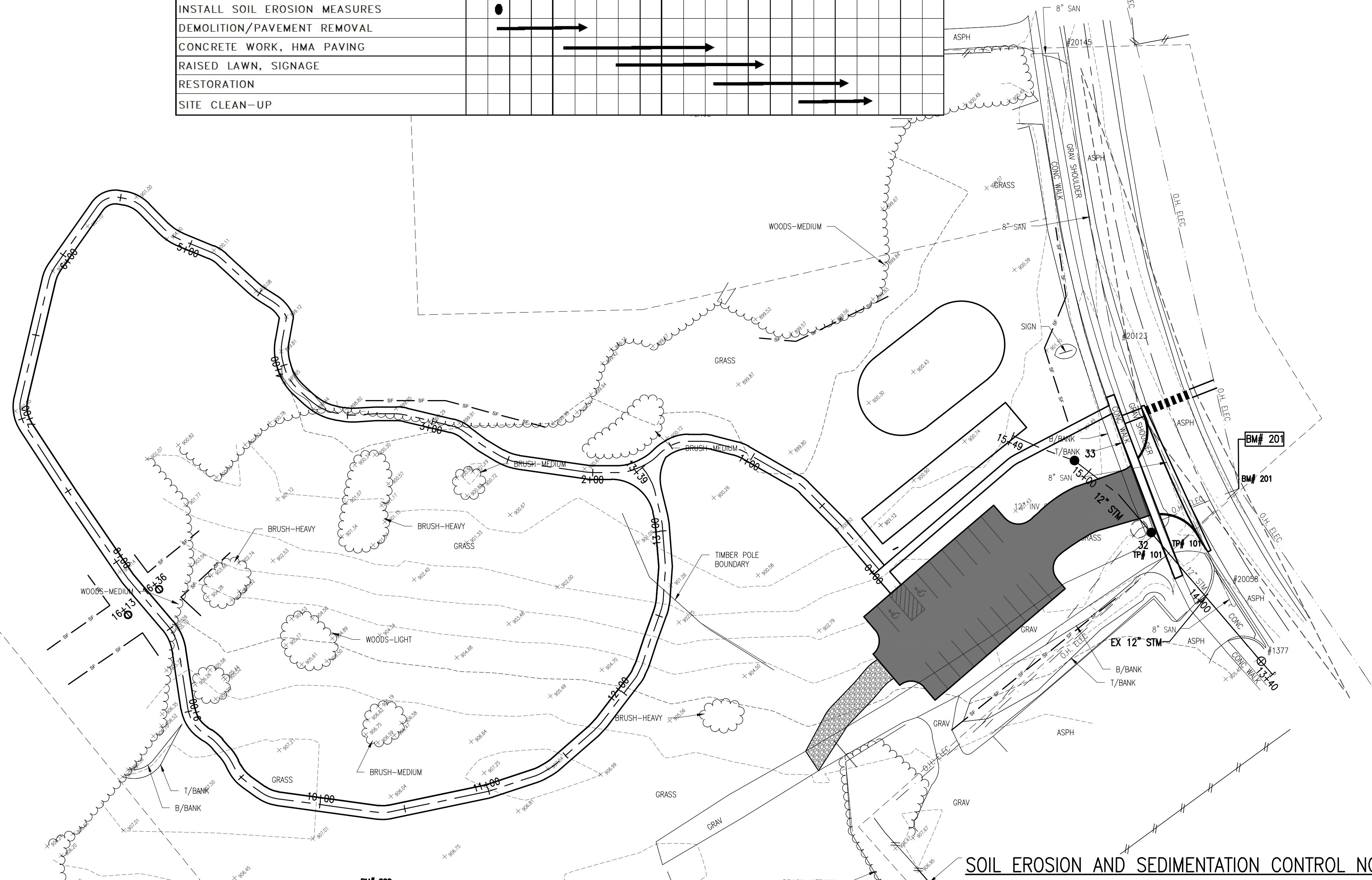
ACTIVITY-2023	JULY	AUGUST	SEPTEMBER	OCTOBER	NOVEMBER
MOBILIZATION					
INSTALL SOIL EROSION MEASURES	●				
DEMOLITION/PAVEMENT REMOVAL	→				
CONCRETE WORK, HMA PAVING		→	→	→	
RAISED LAWN, SIGNAGE			→	→	
RESTORATION				→	→
SITE CLEAN-UP					→



ARCHITECTS ENGINEERS PLANNERS

34000 Plymouth Road
Livonia, MI 48150
P (734) 522-8711 | F (734) 522-6427

OHM-ADVISORS.COM



QUANTITIES THIS SHEET

TOTAL	UNIT	DESCRIPTION
675	Ft	Erosion Control, Silt Fence

SITE DATA

SOIL TYPES:
(MoB) GLYNWOOD LOAM, 2 TO 6% SLOPES
(Pe) PEWAMO CLAY LOAM, 0 TO 2% SLOPES
(Sb) SEBEWA LOAM, DISINTEGRATION MORAINES, 0 TO 2% SLOPES

TEMPORARY SOIL EROSION MEASURES:
SILT FENCE

PROXIMITY TO LAKES AND STREAMS:
TOWNSHIP STORM SEWER IS LOCATED WITHIN THE PROJECT SITES.
WHITMORE LAKE IS DIRECTLY ACROSS MAIN STREET.

PERMANENT SOIL EROSION MEASURES:
3" TOPSOIL, SEED, FERTILIZER STABILIZED WITH MULCH
PAVEMENT

SITE DATA

LOT SIZE: 23.61 ACRES

AREA OF DISTURBANCE: 6.0 ACRES

IMPACTED AREA: TOWNSHIP PROPERTY.

SOME WORK WILL BE DONE IN THE MAIN STREET
RIGHT OF WAY.

EROSION CONTROLS MAINTENANCE PLAN

MEASURE	MAINTENANCE SCHEDULE
SILT FENCE	INSTALL IN AT THE START OF CONSTRUCTION PER PLAN. INSPECT WEEKLY OR AFTER EACH RAIN EVENT. REMOVE ACCUMULATED SEDIMENTS WHEN DEPTH REACHES 6" ABOVE FENCE BOTTOM.
DUST CONTROL	WATER SHALL BE APPLIED TO EXPOSED AREAS BY THE CONTRACTOR IN THE EVENT OF EXCESSIVE AIRBORNE DUST. DUST CONTROL SHALL BE APPLIED AS DIRECTED BY THE ENGINEER OR CITY PERSONNEL.
VEGETATION (PERM)	TOPSOIL, SEED AND MULCH SHALL BE PLACED UPON THE COMPLETION OF THE WATER MAIN AND ROADWAY CONSTRUCTION. SEED SHALL BE WATERED AND MULCH MAINTAINED UNTIL VIGOROUS TURF GROWTH HAS BEEN ESTABLISHED.

SOIL EROSION AND SEDIMENTATION CONTROL NOTES

- CONTRACTOR SHALL COMPLY WITH REQUIREMENTS OF THE SOIL EROSION AND SEDIMENTATION CONTROL ACT OF THE STATE OF MICHIGAN, PART 91 OF ACT 451, OF THE PUBLIC ACTS OF 1994 AND THE REQUIREMENTS OF WASHTENAW COUNTY.
- THE CONTRACTOR SHALL CONDUCT OPERATIONS IN A MANNER THAT WILL REDUCE ACCELERATED EROSION TO THE PRACTICAL MINIMUM AND PREVENT DAMAGING SILTATION TO EXISTING SEWERS AND WATER COURSES LEADING FROM THE WORK SITE.
- THE CONTRACTOR SHALL CONDUCT WORK IN SUCH A MANNER AS TO PREVENT THE ENTRY OF FUELS, OILS, BITUMINOUS MATERIALS, CHEMICALS, SEWERAGE OR OTHER HARMFUL MATERIALS INTO NEARBY LAKES AND STREAMS.
- WASTE DISPOSAL AREAS SHALL BE SELECTED BY THE CONTRACTOR WITH FULL CONSIDERATION OF EROSION AND SEDIMENT CONTROL, SELECTION OF DISPOSAL SITE, AND CONTROL OF OPERATIONS, AND THE RESTORATION OF SAID AREAS SHALL BE SUBJECT TO THE APPROVAL OF THE ENGINEER.
- EXCAVATION FROM THE RIGHT-OF-WAY, CHANNELS, OR OTHER MATERIAL SHALL NOT BE DEPOSITED IN OR NEAR RIVERS, STREAMS OR PONDS WHERE IT MAY ENTER THE WATERWAY.
- AT THE COMPLETION OF EACH DAY'S CONSTRUCTION, CARE SHALL BE TAKEN TO ENSURE THAT MINIMAL EROSION WILL OCCUR IN TRENCHES AND TO STOCKPILED MATERIALS UNTIL RESUMPTION OF WORK
- CONTRACTOR SHALL CONFINE OPERATIONS TO THE MINIMUM AMOUNT OF WORKING SPACE PRACTICAL TO MINIMIZE SOIL EROSION.
- THE PROJECT WILL BE CONTINUALLY INSPECTED BY THE ENGINEER FOR EROSION CONTROL COMPLIANCE. DEFICIENCIES WILL BE CORRECTED BY THE CONTRACTOR IMMEDIATELY UPON NOTICE OF SUCH DEFICIENCIES. FAILURE TO CORRECT THE DEFICIENCIES MAY RESULT IN THE ISSUANCE OF A STOP WORK ORDER AND THERE WILL BE NO CONTRACT TIME EXTENSION GRANTED FOR THIS TYPE OF STOPPAGE.
- TEMPORARY SOIL EROSION CONTROL MEASURES CONSISTING OF SILT FENCE, MULCHING, AND TARPING SHALL BE IMPLEMENTED THROUGHOUT THE ENTIRE CONSTRUCTION PHASE OF THE PROJECT, AND SHALL BE REMOVED BY THE CONTRACTOR AFTER THE PERMANENT SOIL EROSION MEASURES HAVE BEEN COMPLETED.
- THE CONTRACTOR SHALL INSPECT SILT FENCE AFTER EACH RAIN EVENT AND REPAIR POSTS AND FABRIC THAT HAVE BEEN DAMAGED.
- STRAW MULCH WITH NETTING TIE DOWN, HIGH VELOCITY MULCH BLANKET OR OTHER APPROVED MULCH SHALL BE PLACED ON DISTURBED SLOPES WHERE DIRECTED BY THE ENGINEER.
- PERMANENT SOIL EROSION MEASURES CONSISTING OF THM MIXTURE SEED AND MULCH BLANKET SHALL BE COMPLETED WITHIN 5 CALENDAR DAYS OF FINAL GRADING. IN THE EVENT IT IS NOT POSSIBLE TO PERMANENTLY STABILIZE THE AREA DUE TO SITE CONDITIONS AND/OR SEASONAL LIMITATIONS, THE TEMPORARY MEASURES SHALL REMAIN IN FORCE AND SHALL BE MAINTAINED BY THE CONTRACTOR UNTIL SUCH TIME AS IT IS PRACTICAL TO COMPLETE THE PERMANENT SOIL EROSION CONTROL MEASURES.
- THE ENGINEER SHALL HAVE FULL AUTHORITY TO TEMPORARILY SUSPEND WORK IN THE EVENT THAT ANY OF THE ABOVE REQUIREMENTS ARE NOT BEING MET BY THE CONTRACTOR, OR IF CONDITIONS INDICATE THAT ADDITIONAL TEMPORARY CONTROL MEASURES ARE WARRANTED, IN THE OPINION OF THE ENGINEER.
- PRIOR TO THE START OF WORK, THE CONTRACTOR SHALL INSTALL INLET FILTERS AT ALL INLETS IN THE CONSTRUCTION AREA PER DETAIL DRAWING SI-2 AND SI-4, INLET FILTER. ALL OTHER SESC MEASURES TO BE IN PLACE PRIOR TO START OF CONSTRUCTION.
- THE CONTRACTOR SHALL BE RESPONSIBLE FOR THE MAINTENANCE OF THE TEMPORARY ROAD SURFACE AND SOIL EROSION CONTROL MEASURES WITHIN THE CONSTRUCTION AREA UNTIL THE FULL COMPLETION OF THE PROJECT.
- ALL WORK TO BE COMPLETED WITHIN EXISTING RIGHT-OF-WAY AND/OR EASEMENTS.
- NORTHFIELD TOWNSHIP (734-449-2880) TO MAINTAIN PERMANENT SOIL EROSION AND SEDIMENTATION CONTROL MEASURES UPON COMPLETION OF PROJECT.



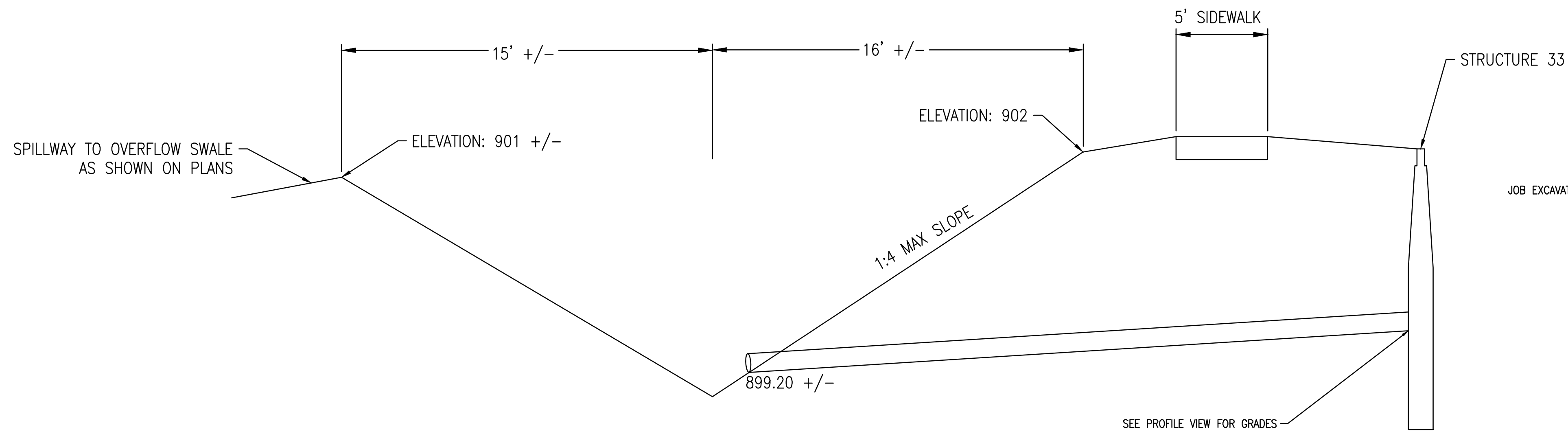
Know what's below.
Call before you dig.

DRAWING PATH: P:\0126_01650151\00000_NorthVillageDrawings\Civil\Misc\190030SEC.dwg Apr 13, 2023 - 11:53am

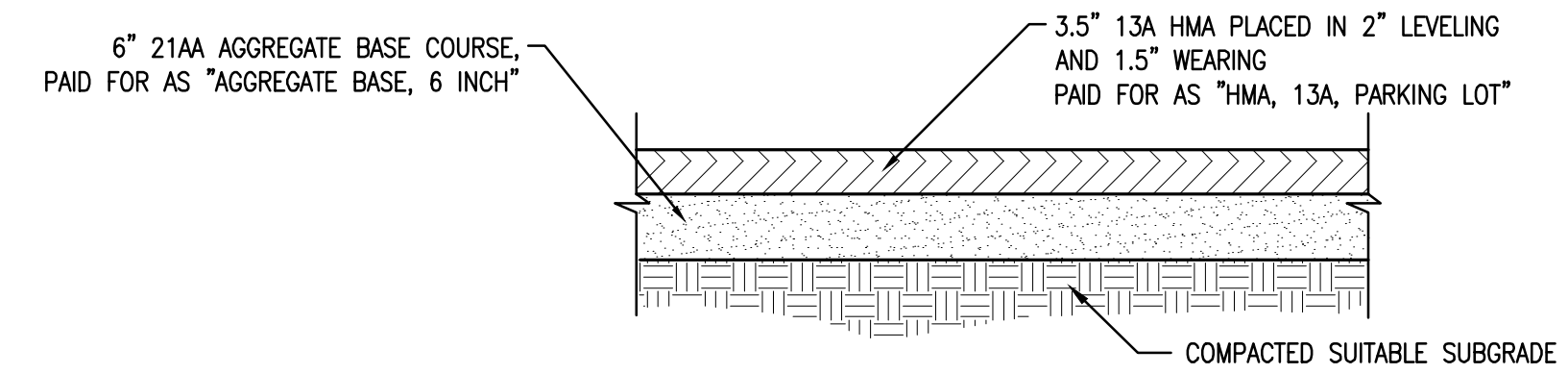
DATE: 01-18-2023; PROJ. NO.: 015-18-020; ENGR.: MM; PROJ. MGR.: MM; CAD: KB; COUNTY: WASHTENAW; MUNICIPALITY: NORTHFIELD TOWNSHIP

NORTHFIELD TOWNSHIP
COMMUNITY PARK - PATHWAYS AND PARKING
SOIL EROSION AND SEDIMENTATION CONTROL PLAN

COPYRIGHT 2019 OHM ALL DRAWINGS AND WRITTEN MATERIALS APPEARING HEREIN CONSTITUTE THE ORIGINAL AND UNPUBLISHED WORK OF OHM AND THE SAME MAY NOT BE DUPLICATED, DISTRIBUTED, OR DISCLOSED WITHOUT PRIOR WRITTEN CONSENT OF OHM

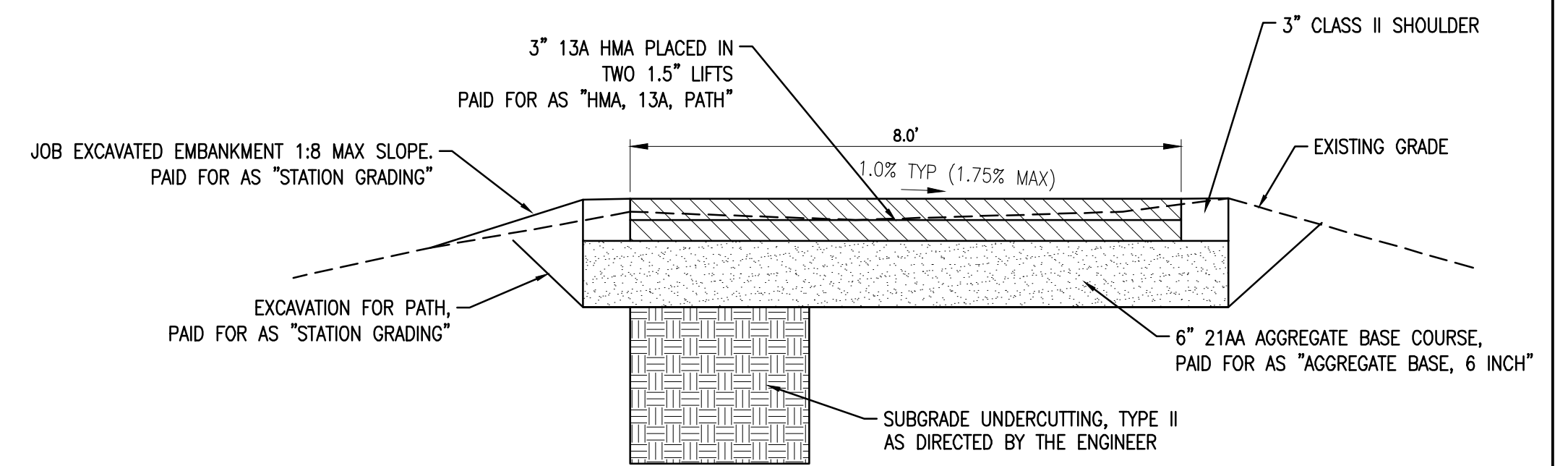


TYPICAL RAIN GARDEN SECTION
 NOT TO SCALE

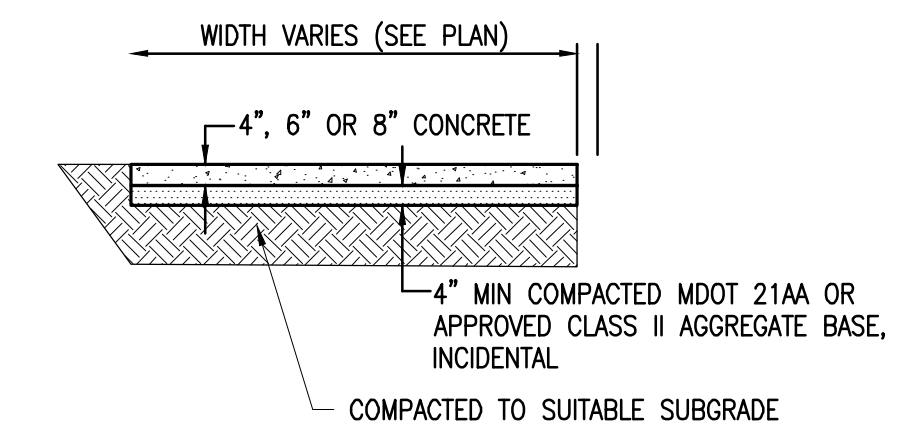


TYPICAL PARKING LOT CROSS SECTION
 NTS

NOTE:
 1. EXCAVATION AND GRADING PAID FOR AS "EARTHWORK"

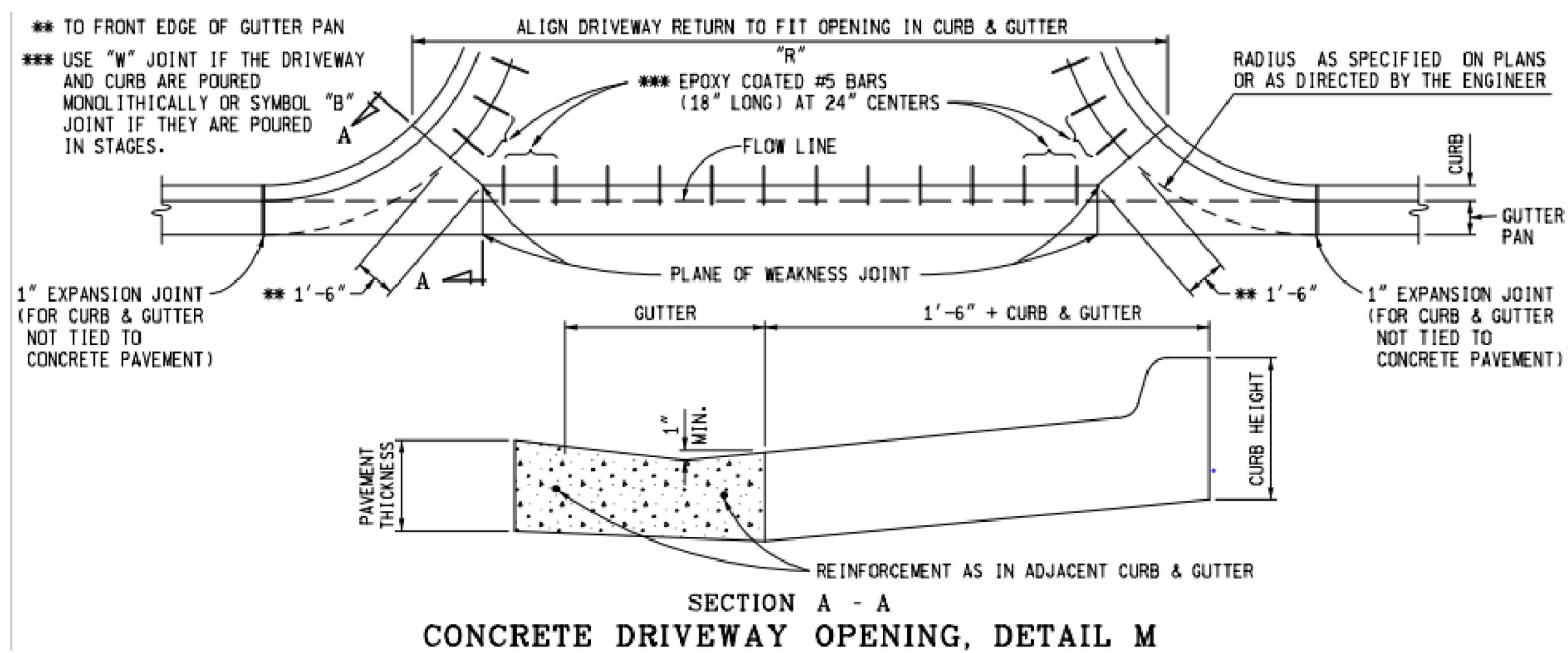


TYPICAL PATH CROSS SECTION
 NTS

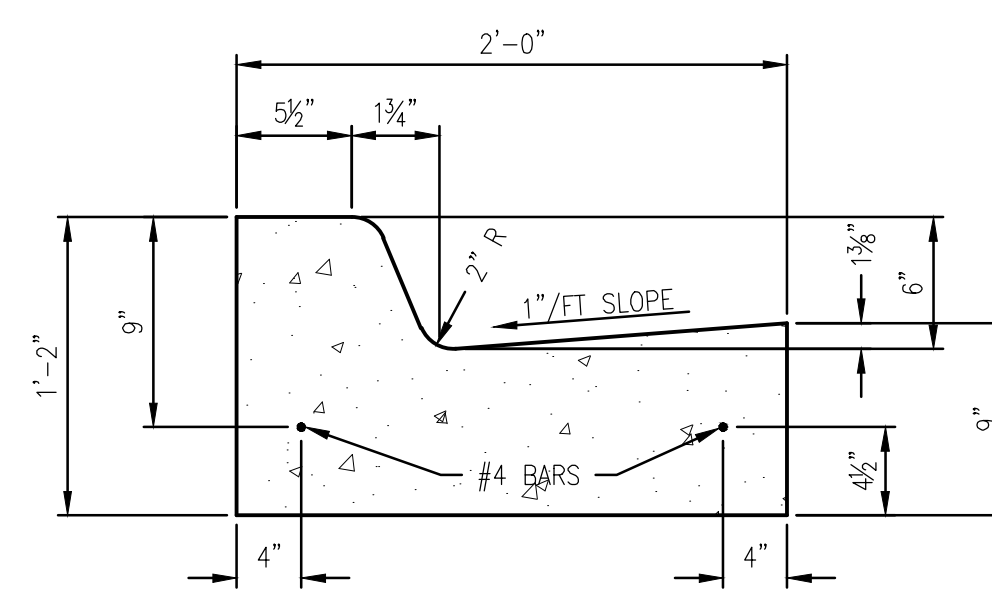


NOTES:
 1. PLACE 1/4" CONTRACTION JOINTS AT 5' INTERVALS
 2. PLACE 1/2" EXPANSION JOINTS AT 50' INTERVALS (MAX)

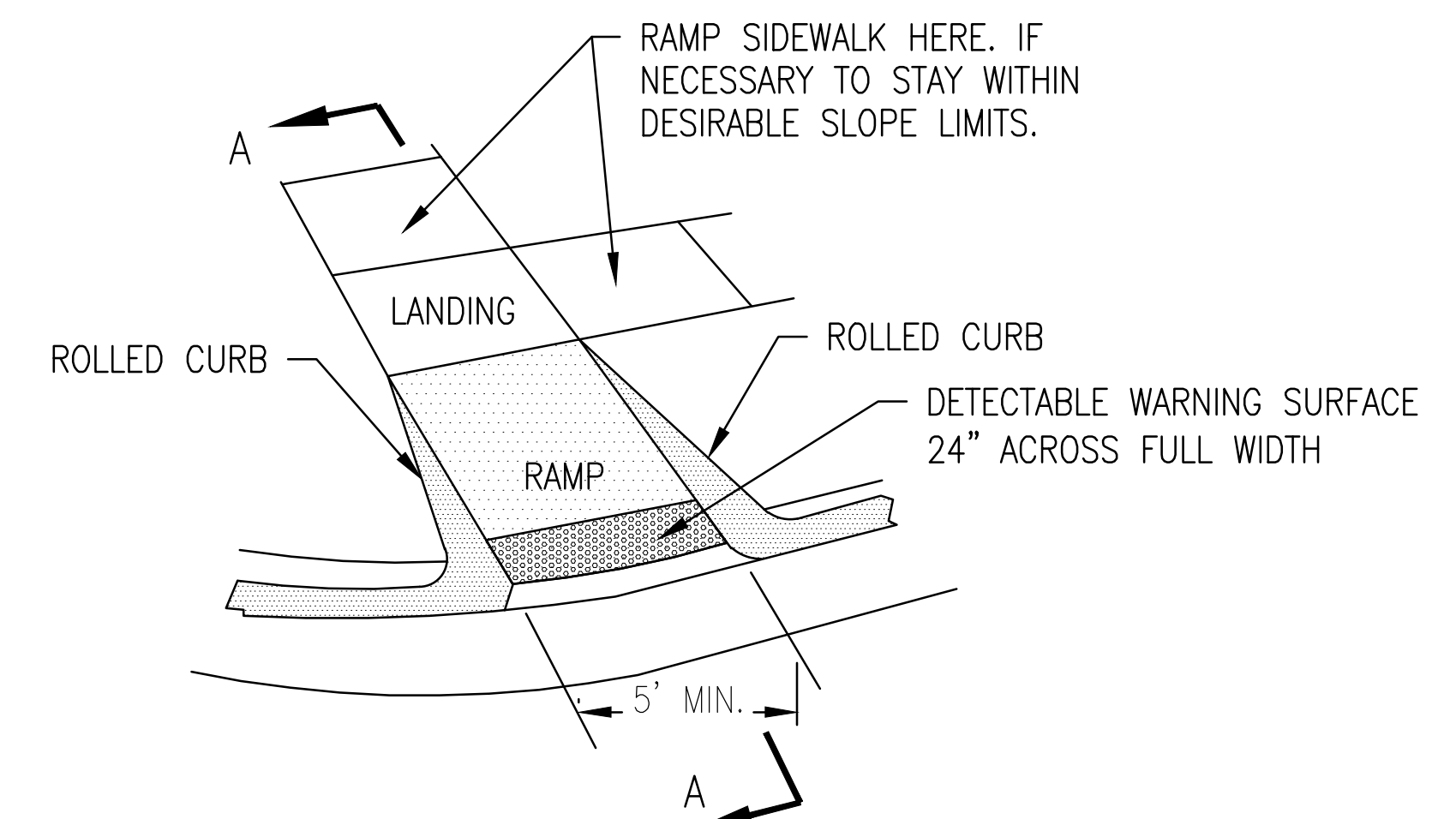
CONCRETE SIDEWALK
 NTS



CONCRETE DRIVEWAY OPENING, DETAIL M



MDOT TYPE F-4
 CONCRETE CURB AND GUTTER DETAIL
 NOT TO SCALE



SIDEWALK RAMP MDOT R-28
 NOT TO SCALE

REVISIONS:

DATE	PROJ. NUMBER	ENG.	PROJ. MGR.	CADD.	COUNTY	CITY/VILLAGE/TOWNSHIP	SCALE	V.	H.	VERT. DATUM	HORIZ. DATUM
	0151-15-030	MM	MM	KB	WASHINGTON	NORTHFIELD TOWNSHIP	1"=40'	1"=4'		NAVD83	NAVD83

NORTHFIELD TOWNSHIP
 COMMUNITY PARK - PATHWAYS AND PARKING
 MISCELLANEOUS DETAILS

DRAWING PATH: P:\0126\01650151\00030_NorthVillageDrawings\Civil\Details\190030DET.dwg Apr 05, 2023, 7:35pm

COPYRIGHT 2017 OHM ALL DRAWINGS AND WRITTEN MATERIALS APPEARING HEREIN CONSTITUTE THE ORIGINAL AND UNPUBLISHED WORK OF OHM AND THE SAME MAY NOT BE DUPLICATED, DISTRIBUTED, OR DISCLOSED WITHOUT PRIOR WRITTEN CONSENT OF OHM

JOB BENCHMARK # 200
SET COTTON SPINDLE IN
S'LY FACE OF TWIN STUMP, 18"
ELEV 908.83

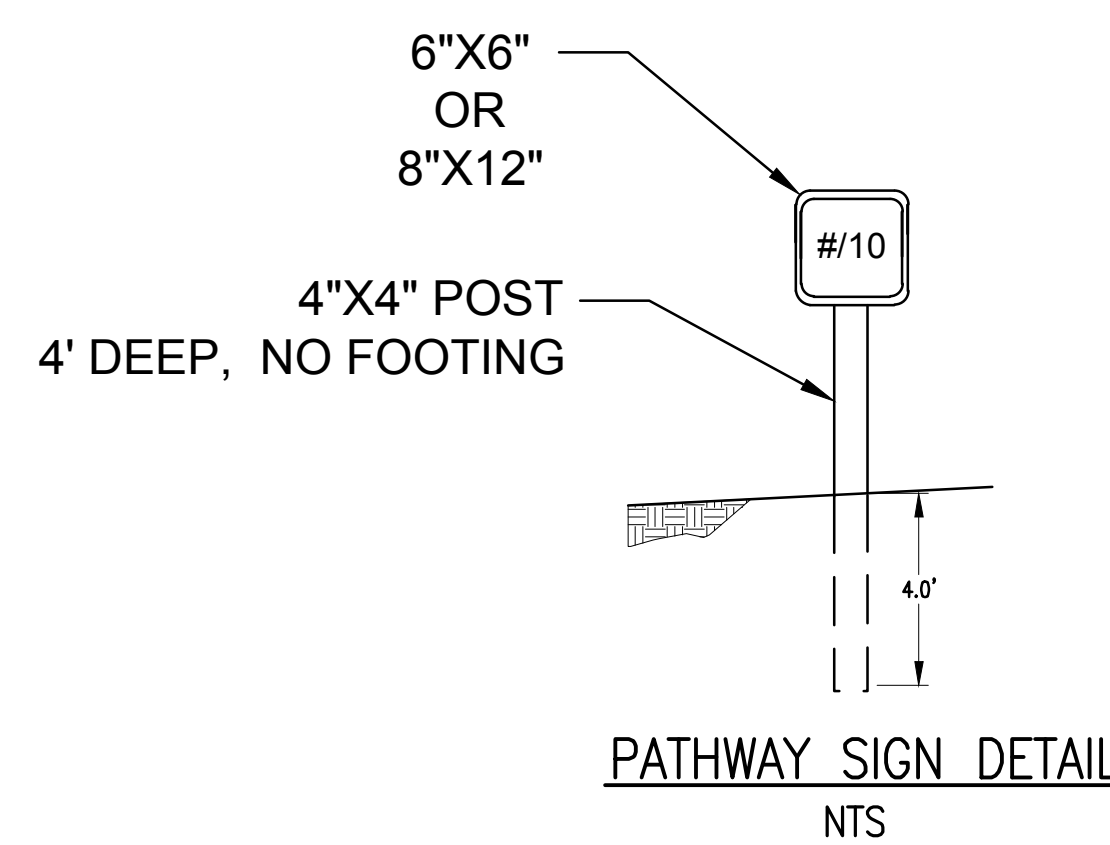
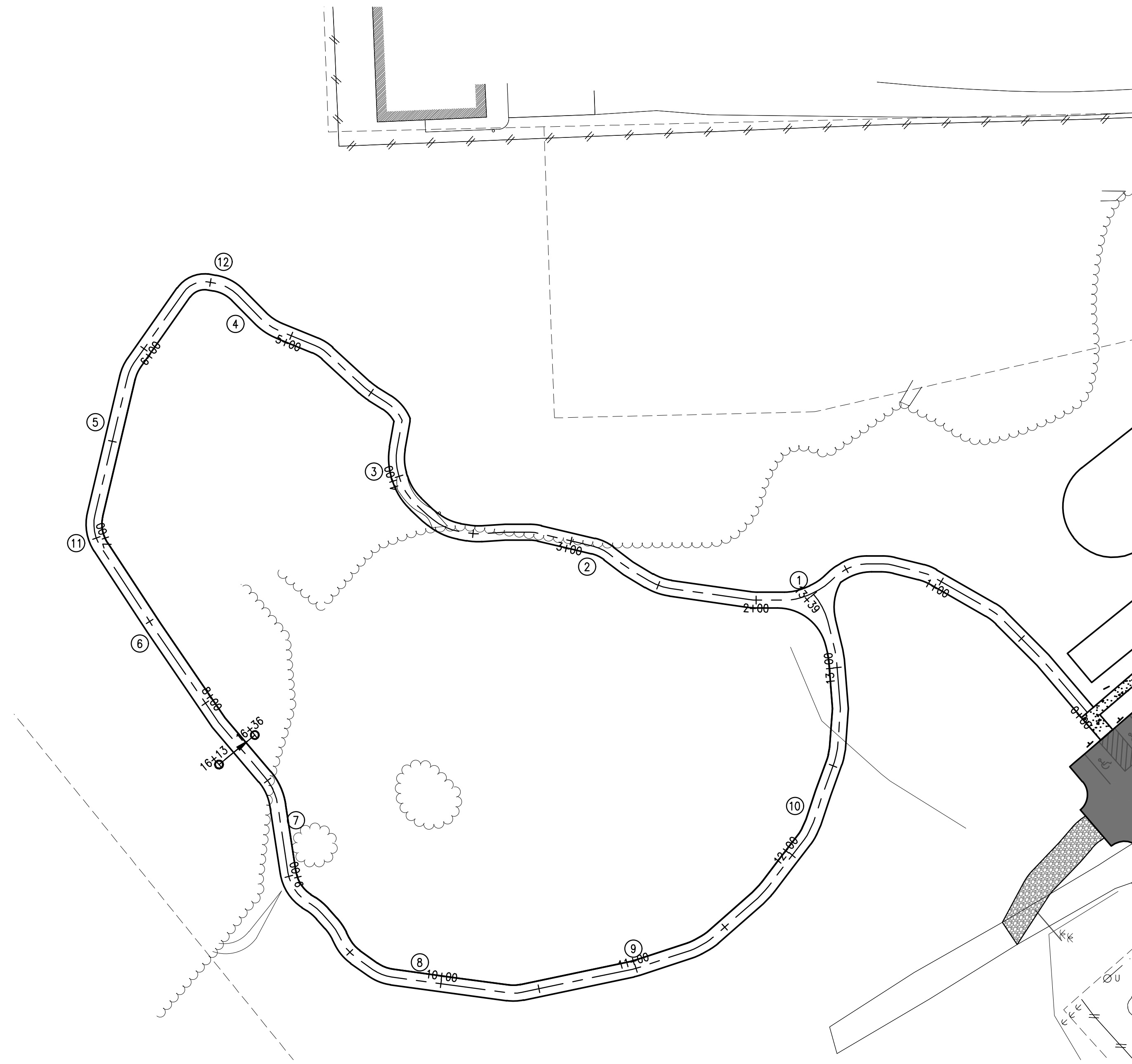
JOB BENCHMARK # 201
SET COTTON SPINDLE IN W FACE
OF POWER POLE ON E SIDE OF
MAIN ST ACCROSS FROM PARK DR
ELEV 903.09

TRAVERSE POINT # 100
N 337470.321
E 13285365.540 ELEV 905.97

TRAVERSE POINT # 101
N 337788.090
E 13285960.880 ELEV 903.94

QUANTITIES THIS SHEET

TOTAL	UNIT	DESCRIPTION
12	Ea	Construct & Install Sign Per Plan Detail



PARK SIGNS			
NUMBER	CONTENT	SIZE	COLOR
1	1/2 MILE LOOP - 10	8"X12"	RED
2	10	6"X6"	RED
3	10	6"X6"	RED
4	10	6"X6"	RED
5	10	6"X6"	RED
6	10	6"X6"	RED
7	10	6"X6"	RED
8	10	6"X6"	RED
9	10	6"X6"	RED
10	10	6"X6"	RED
11	BARKER CONNECTION (1/4 MILE)	8"X12"	BLUE
12	UNPAVED TRAIL, USE AT OWN RISK	8"X12"	BROWN

ARCHITECTS ENGINEERS PLANNERS

34000 Plymouth Road
Livonia, MI 48150
P (734) 522-6711 | F (734) 522-6427
OHM-ADVISORS.COM

ISSUE - MONIE GRANT PROJECT

REVISIONS:

NO.	DATE	DESCRIPTION

DATE	PROJ NUMBER	ENG ARCH	MM	PROJ MGR	MM	CADD	MM	COUNTY	WASHINGTON	MANIPALITY	NORTHFIELD TOWNSHIP
------	-------------	----------	----	----------	----	------	----	--------	------------	------------	---------------------

NORTHFIELD TOWNSHIP
COMMUNITY PARK - PATHWAYS AND PARKING
PARK SIGNAGE PLAN



DRAWING PATH: P:\0126_01650151\900000_NorthVillage\Drawings\Civil\Plans_Const\1900300CON.dwg Apr 05, 2023, 7:52pm

COPYRIGHT 2019 OHM ALL DRAWINGS AND WRITTEN MATERIALS APPEARING HEREIN CONSTITUTE THE ORIGINAL AND UNPUBLISHED WORK OF OHM AND THE SAME MAY NOT BE DUPLICATED, DISTRIBUTED, OR DISCLOSED WITHOUT PRIOR WRITTEN CONSENT OF OHM